

# Straight-Spike Floating Weeder

*Technical drawings*

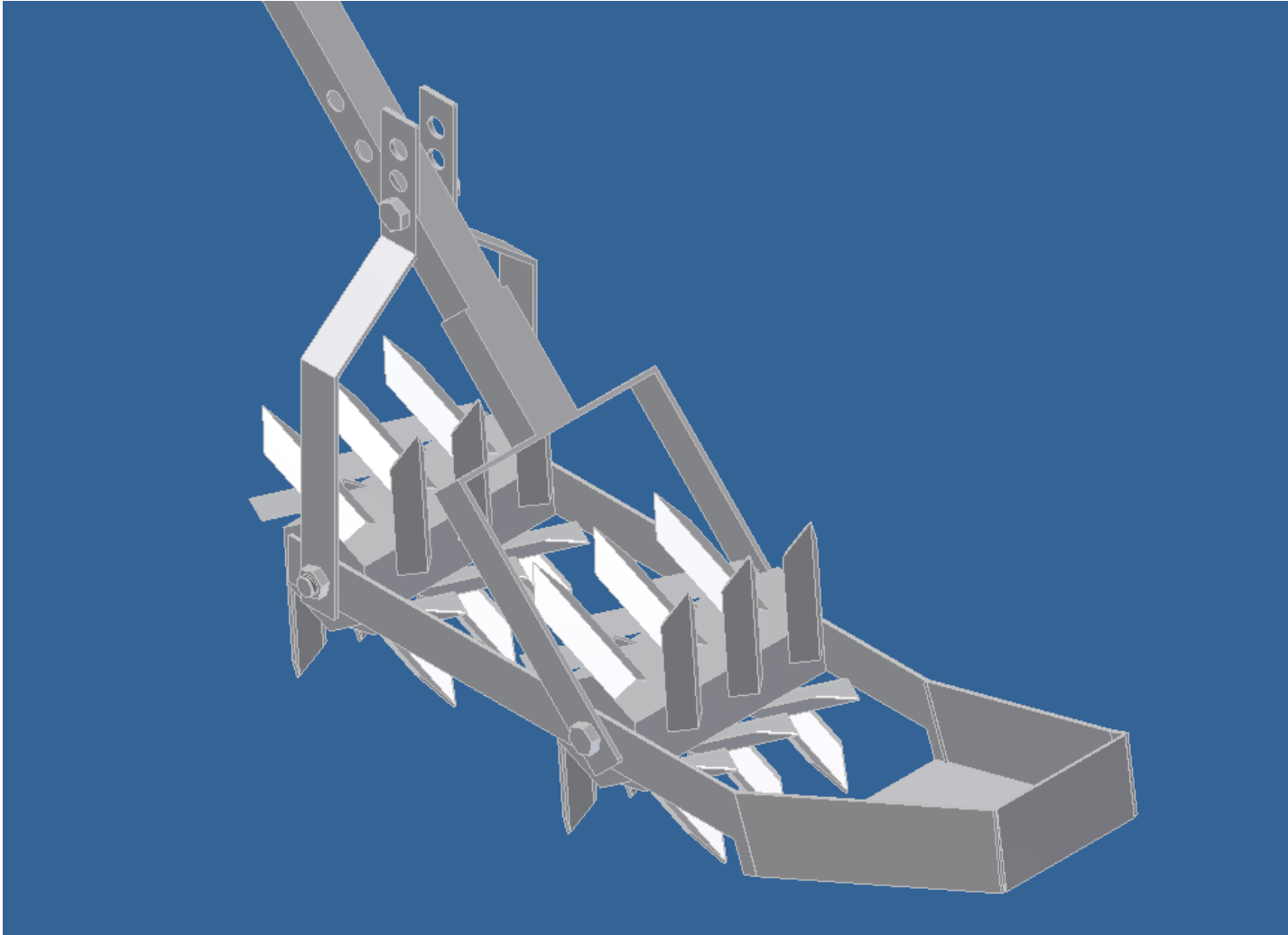


*Prepared by Godfrey Mwinama, Centre for Agricultural Mechanization and Rural Technology  
(CAMARTEC), Arusha, Tanzania*

*Edited and convened by Jonne Rodenburg, Africa Rice Center (AfricaRice), Dar es Salaam, Tanzania*



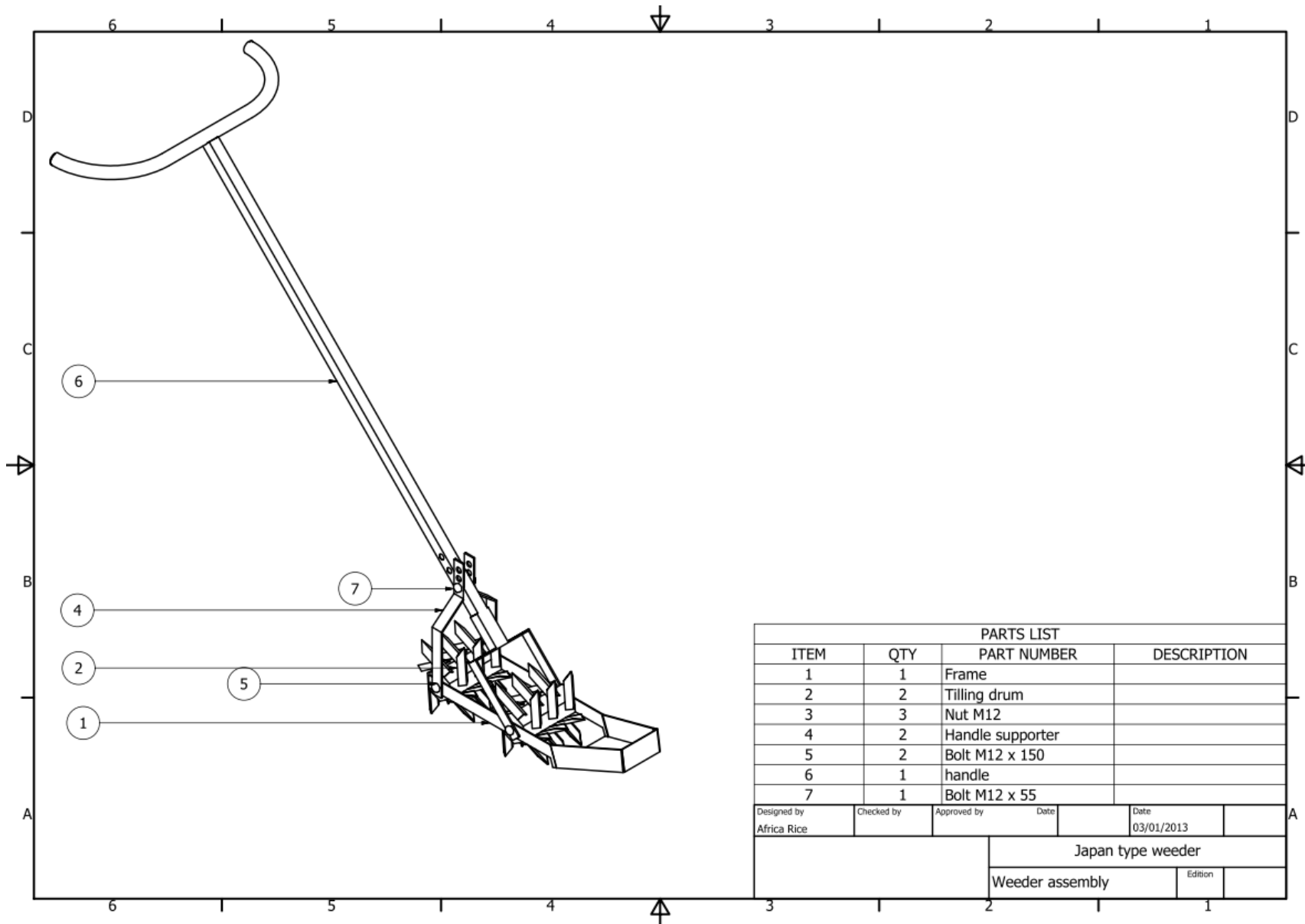
**AfricaRice**



**Figure 1: Pictorial view of Straight-Spike Floating Weeder assembly (without handle)**



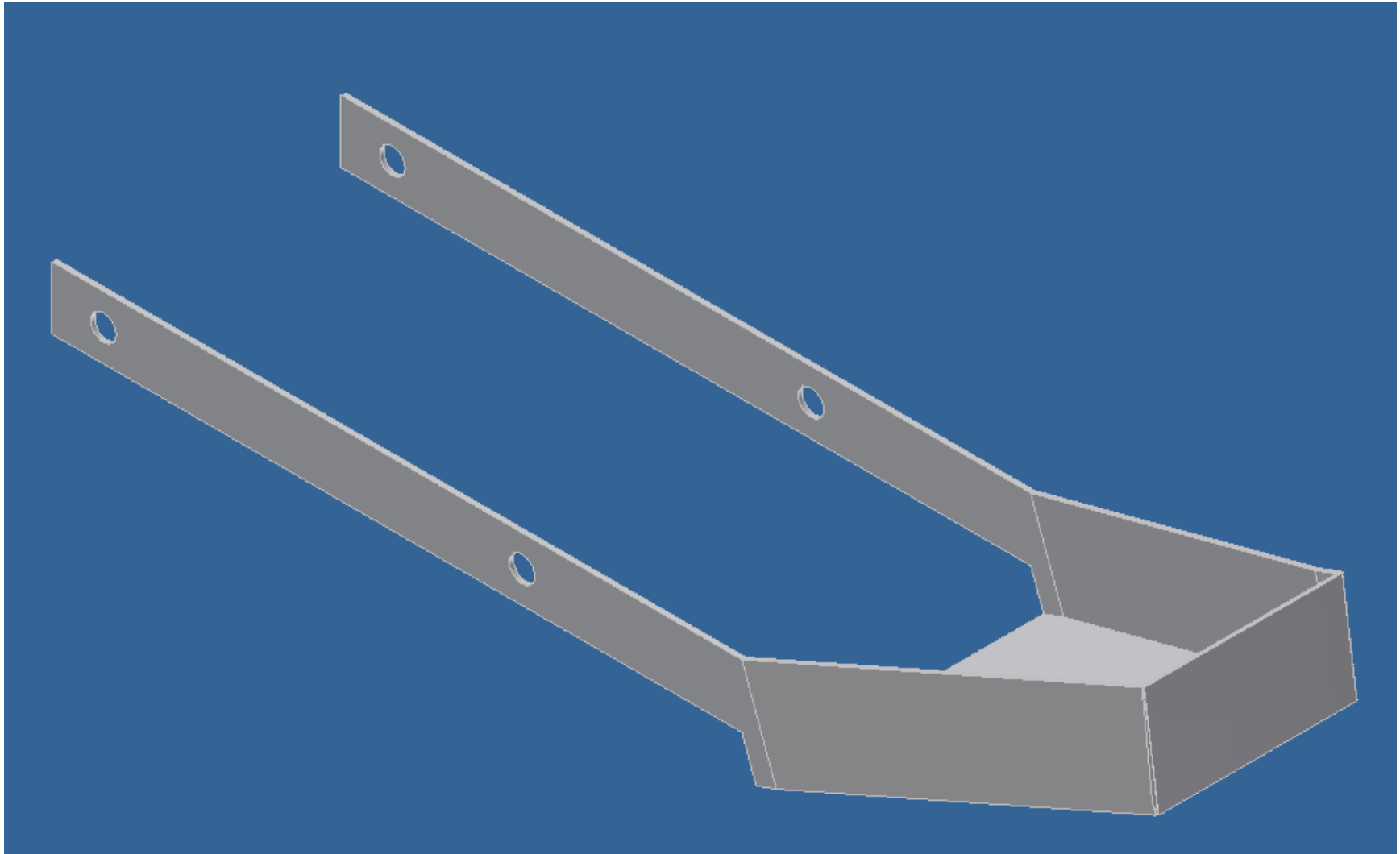
**Figure 2A: Pictorial view of the Straight-Spike Floating Weeder assembly**



**Figure 3B: Technical drawing of the Straight-Spike Floating Weeder assembly**



**Figure 4: Positioning of important parts of the Straight-Spike Floating Weeder**



**Figure 5A: Pictorial view of frame with floater**

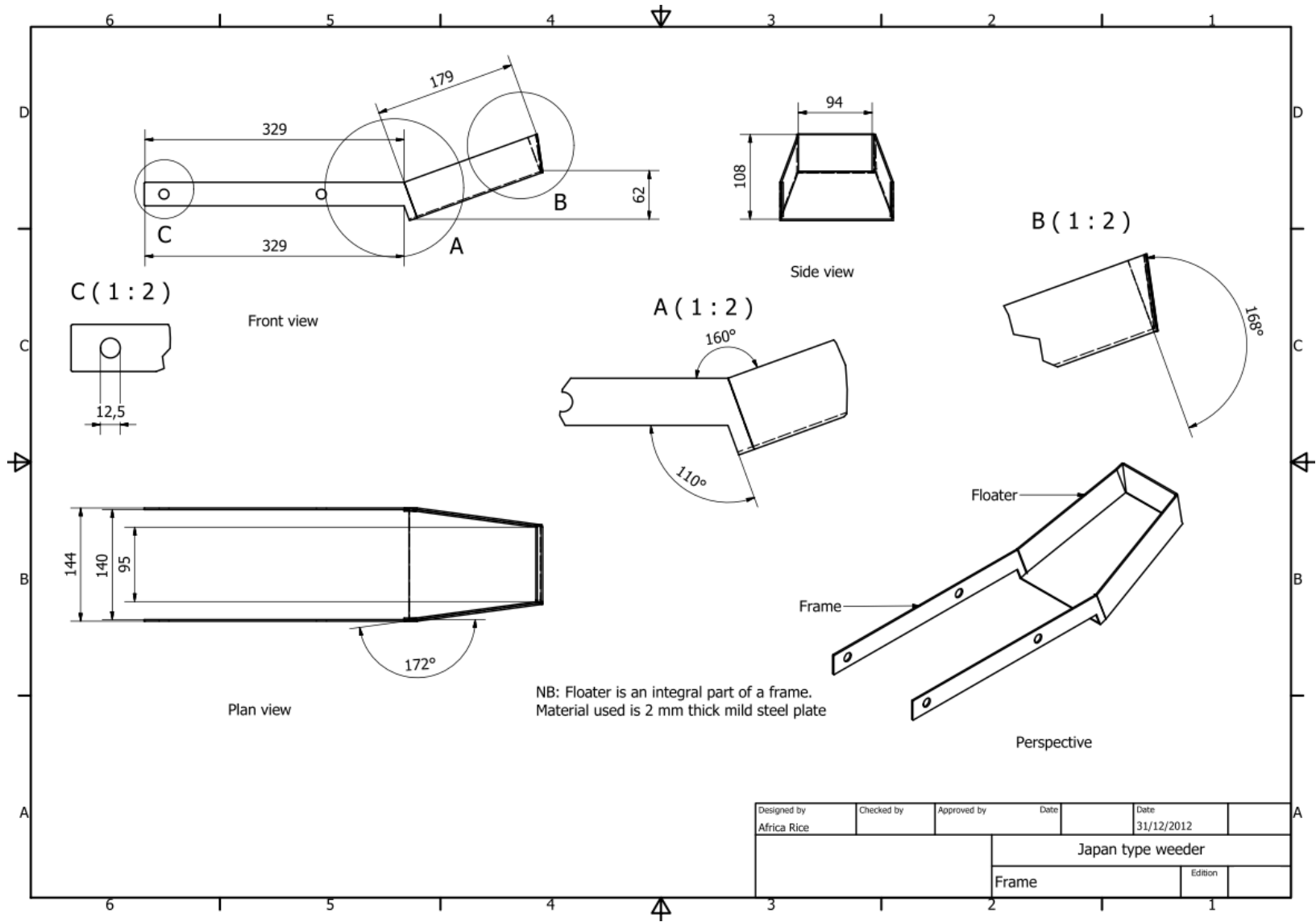
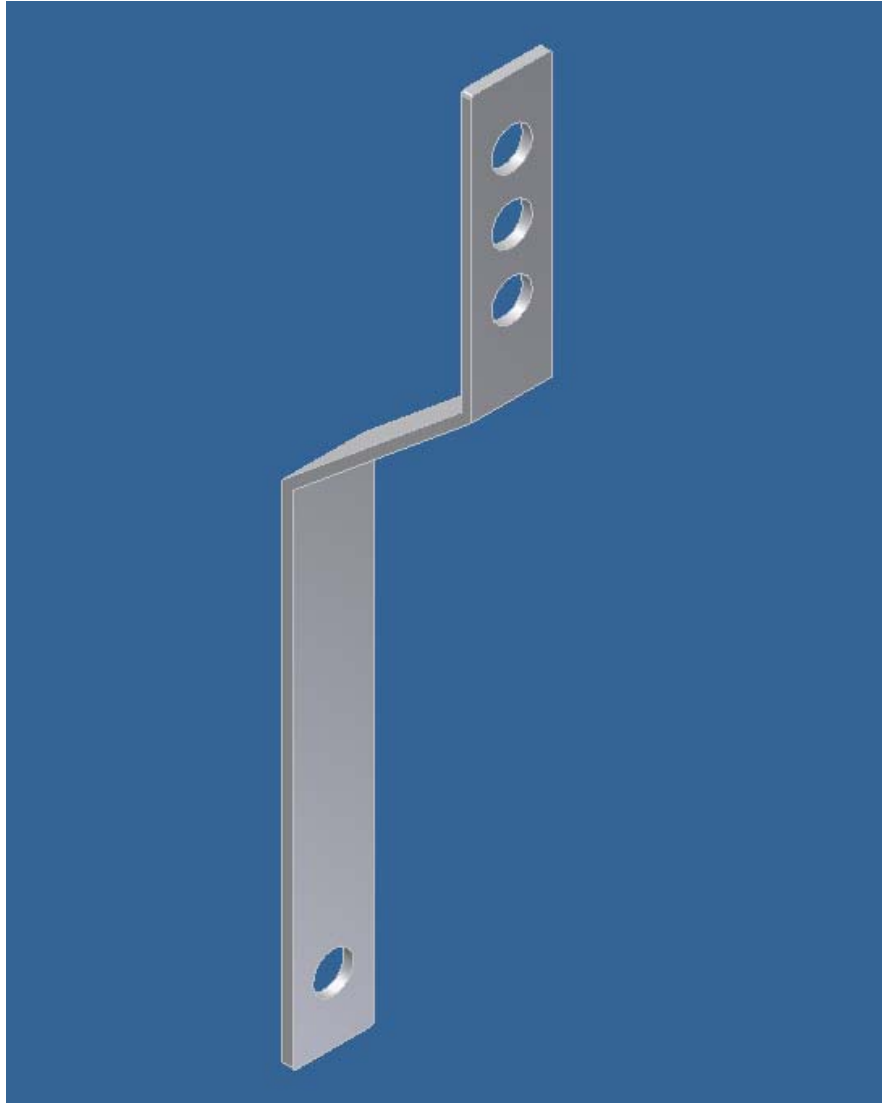


Figure 6B: Technical drawing of frame with floater



**Figure 7A: Pictorial view of handle supporter**



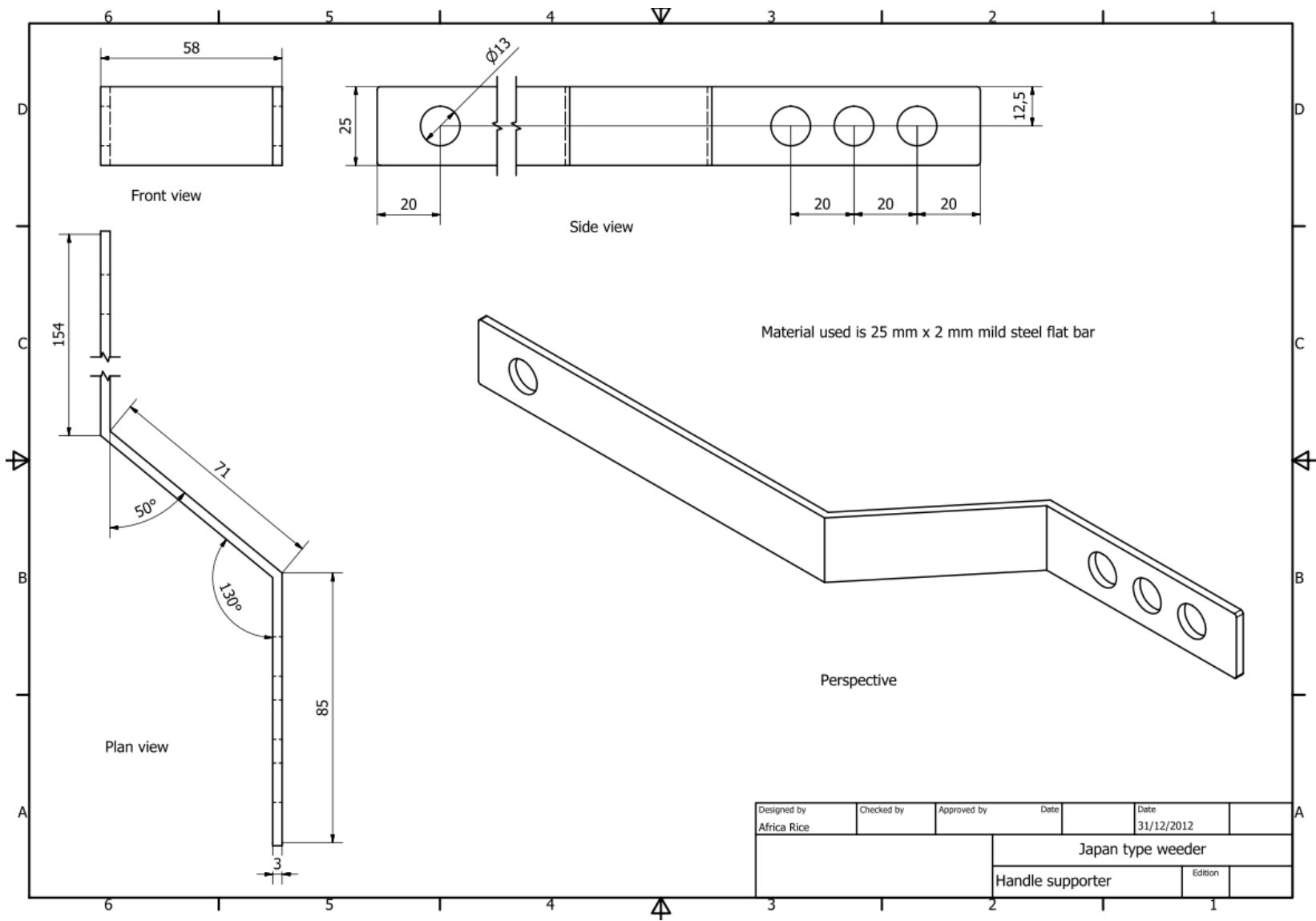
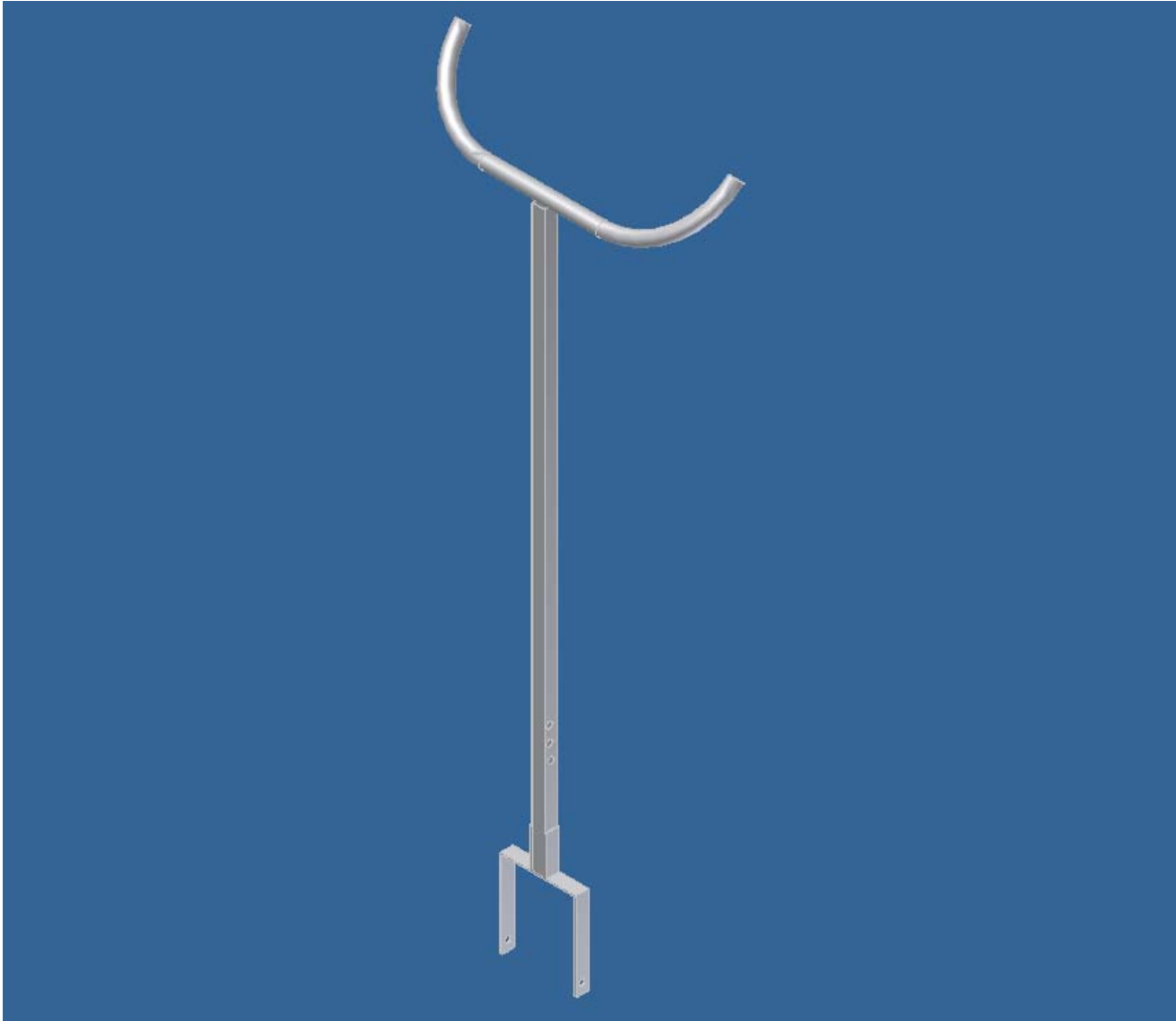


Figure 8B: Technical drawing of handle supporter



**Figure 9A: Pictorial view of handle**

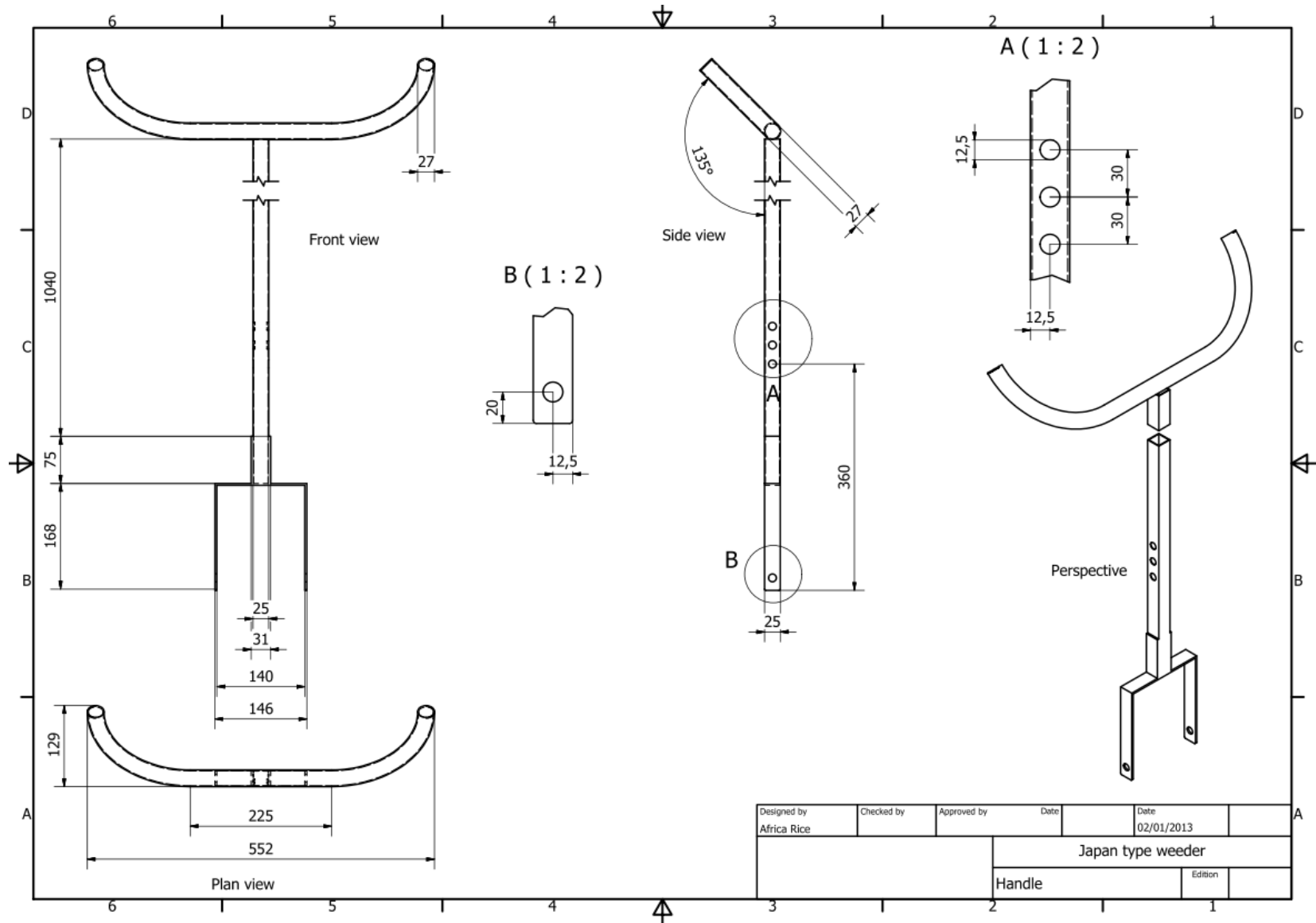
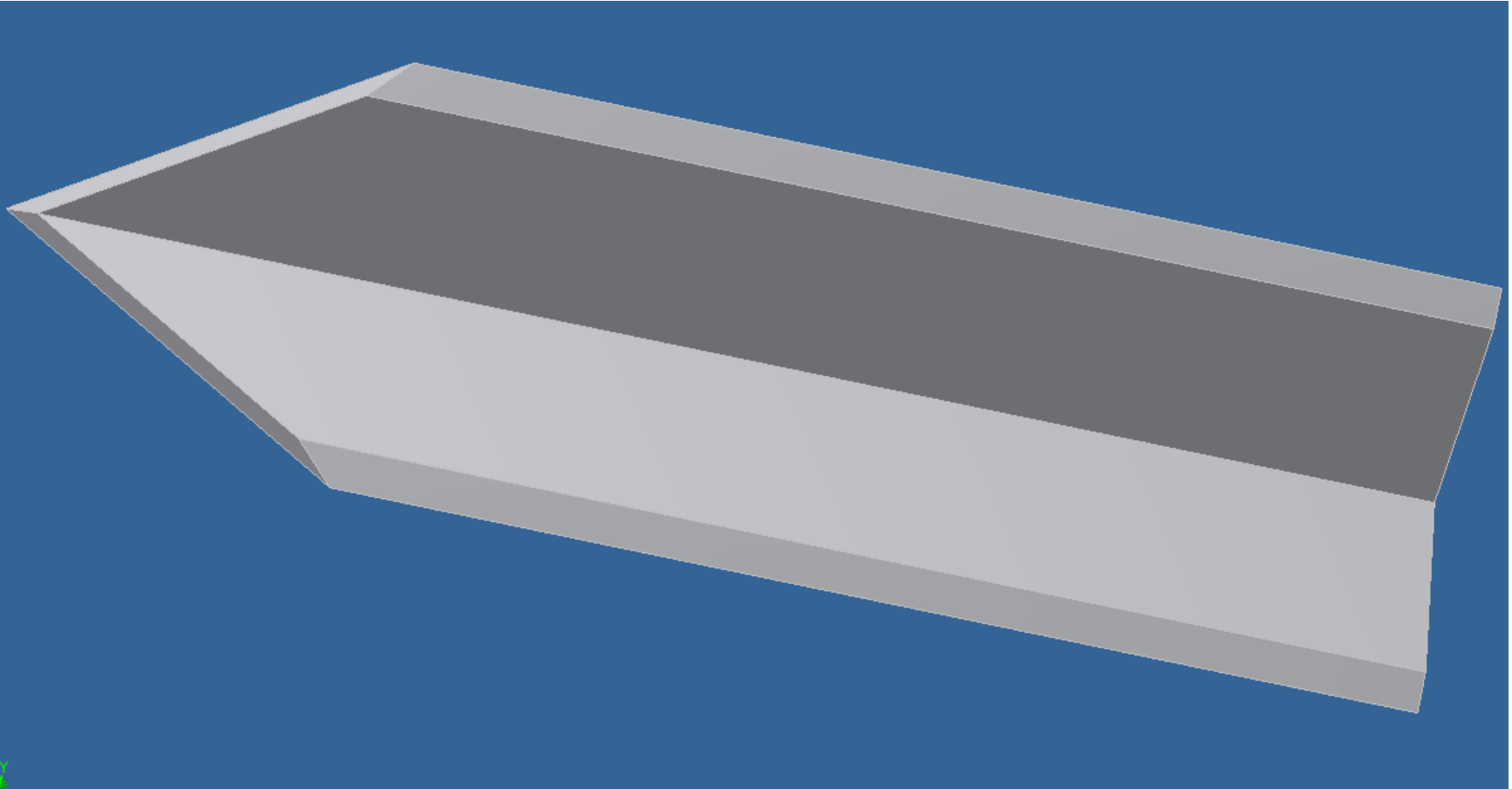


Figure 10B: Technical drawing of handle



**Figure 11A: Pictorial view of tilling finger**

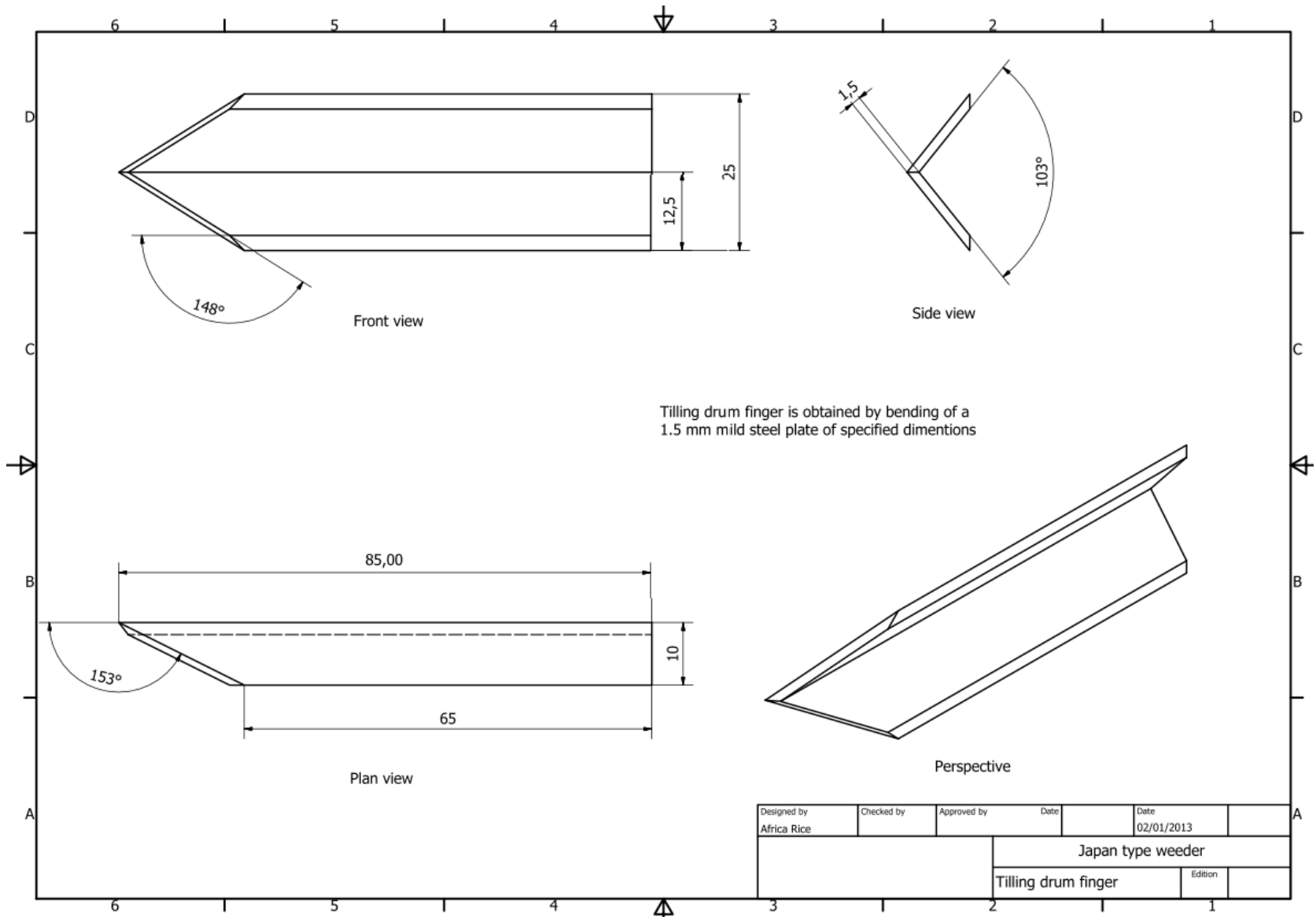
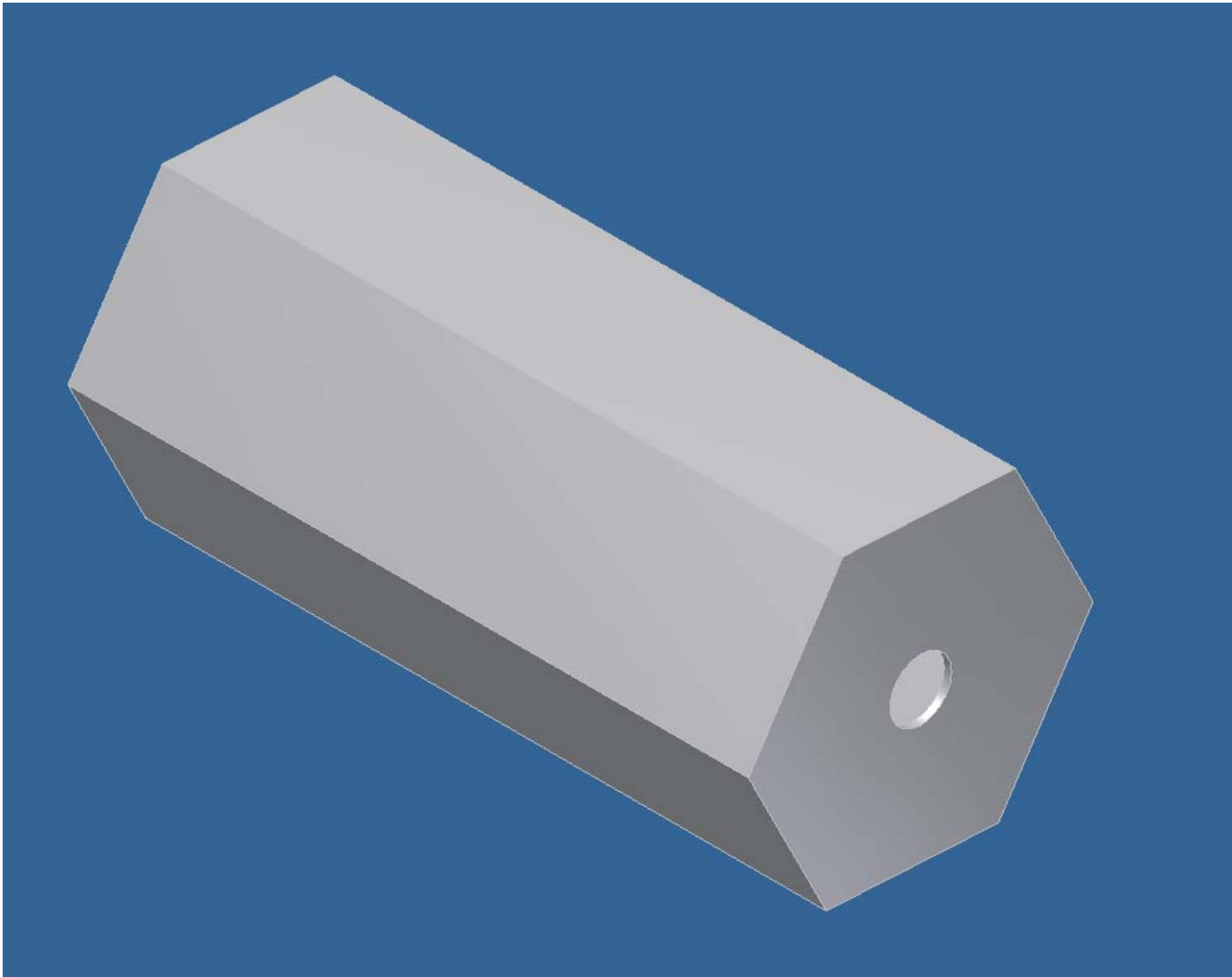
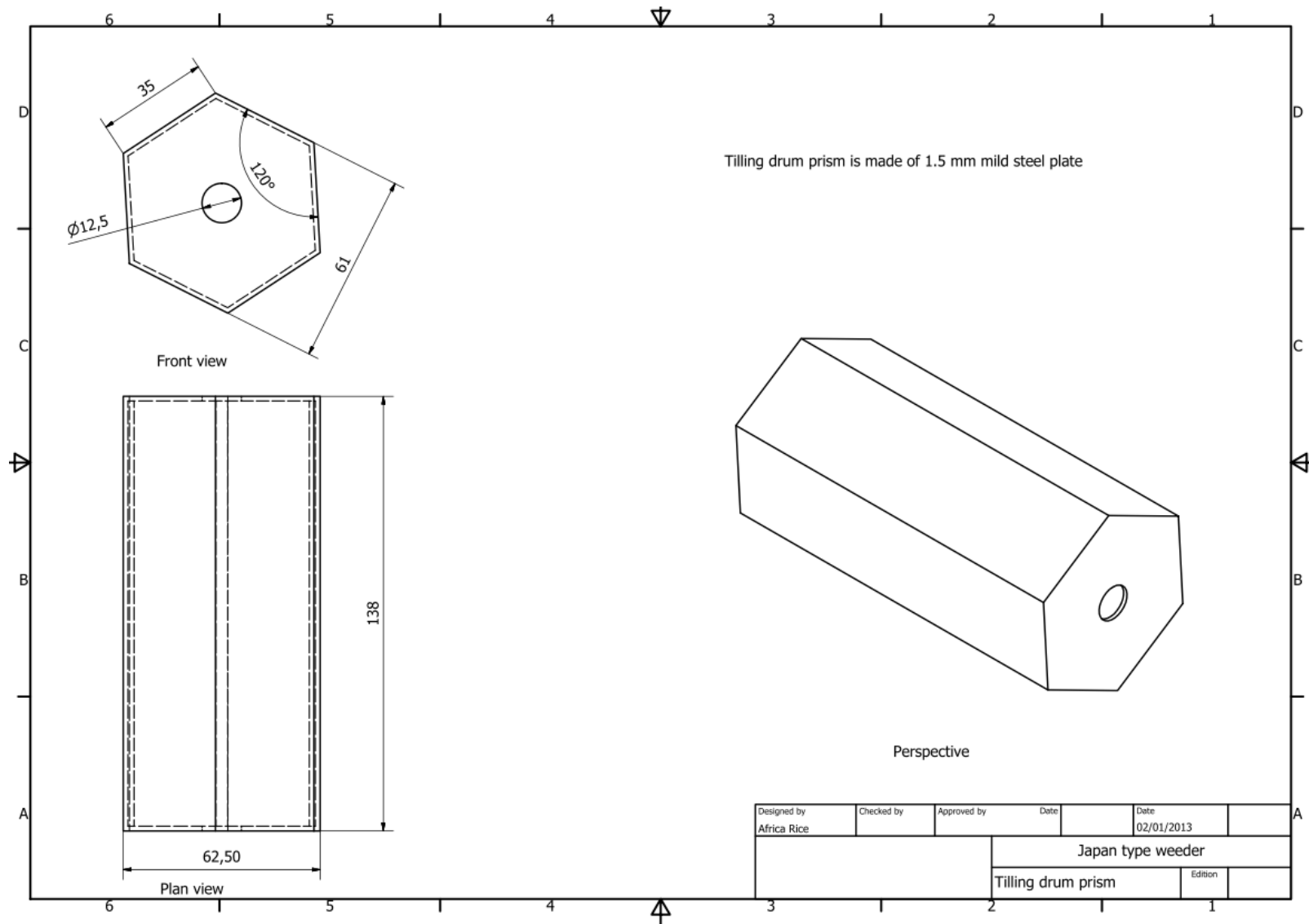


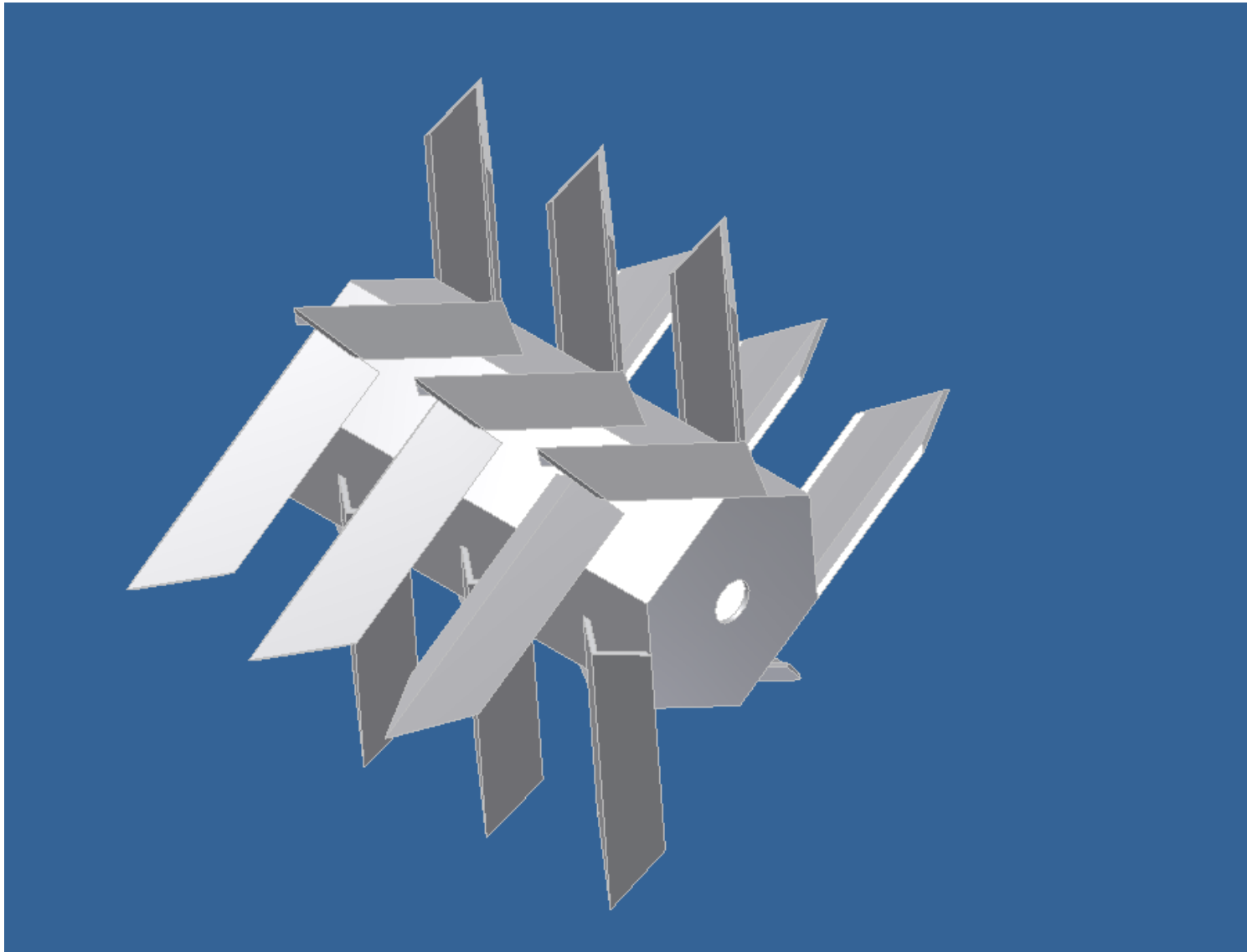
Figure 12B: Technical drawing of tilling finger



**Figure 13A: Pictorial view of tilling drum prism**

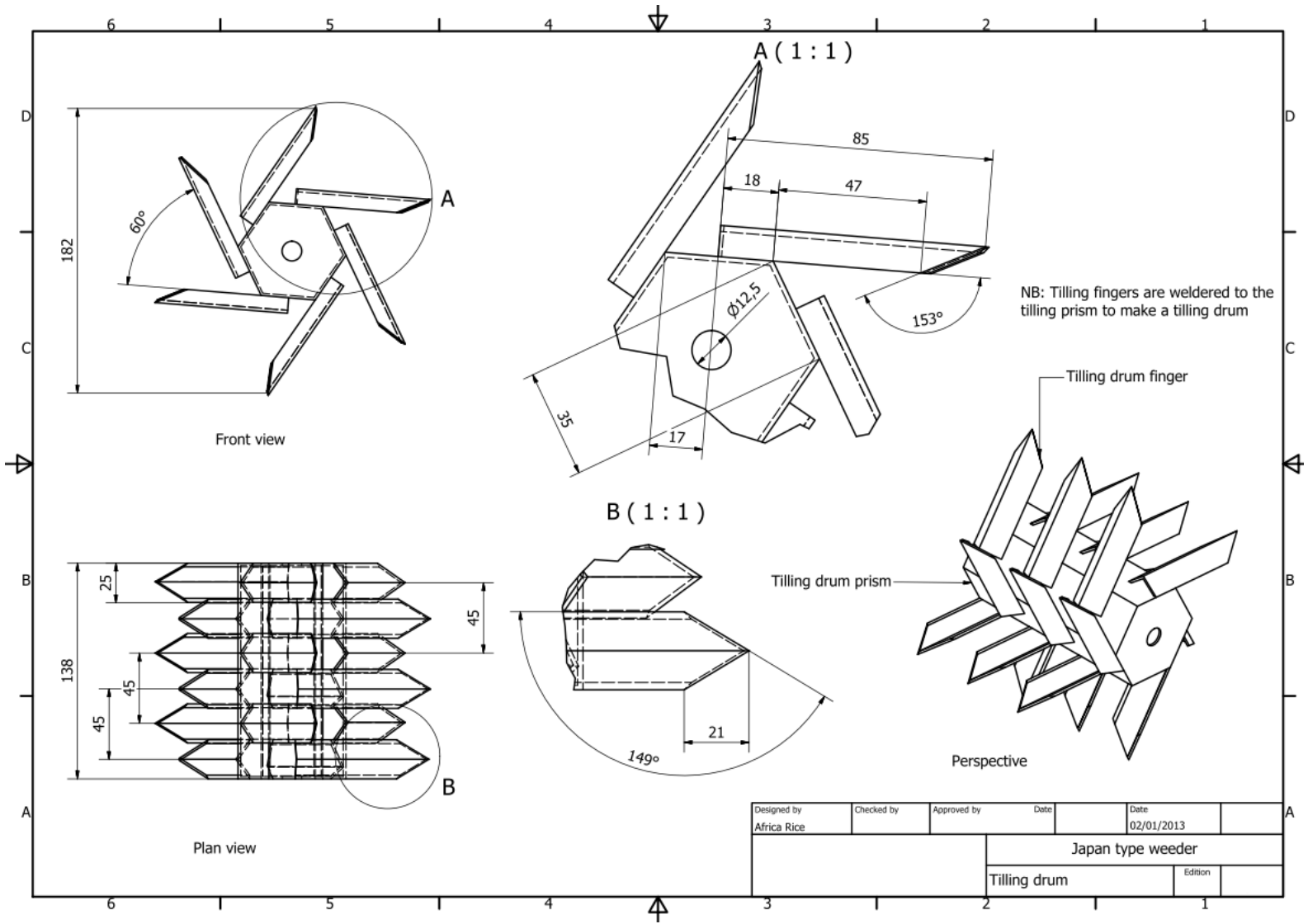


**Figure 14B: Technical drawing of tilling drum prism**



**Figure 15A: Pictorial view of tilling drum**





**Figure 16B: Technical drawing of tilling drum**