

Twisted-Spike Floating Weeder

Technical drawings



*Prepared by Godfrey Mwinama, Centre for Agricultural Mechanization and Rural Technology
(CAMARTEC), Arusha, Tanzania*

*Edited and convened by Jonne Rodenburg, Africa Rice Center (AfricaRice), Dar es Salaam,
Tanzania*



AfricaRice



Figure 1A: Pictorial view of the Twisted-Spike Floating Weeder assembly

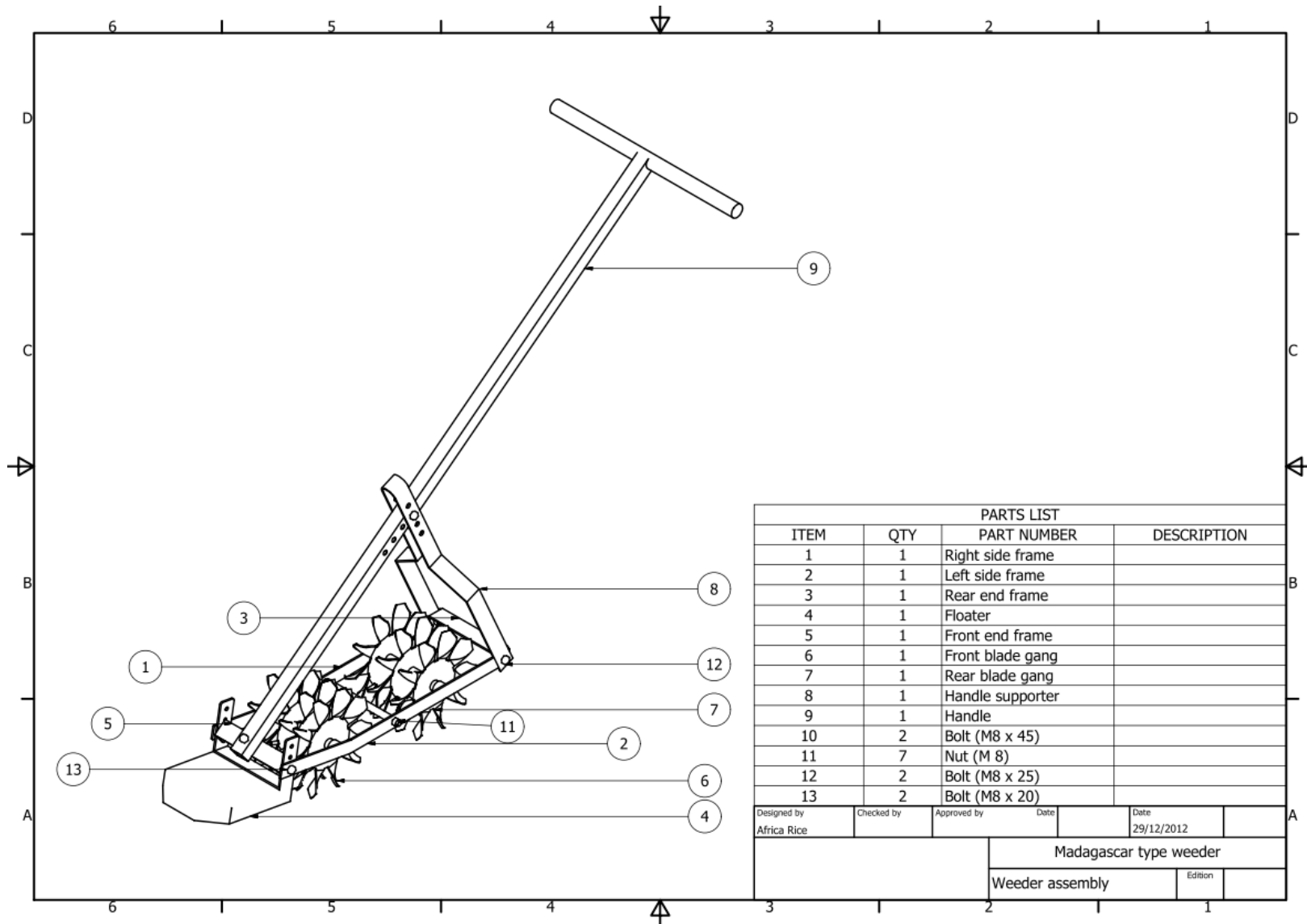


Figure 2B: Technical drawing of the Twisted-Spike Floating Weeder assembly

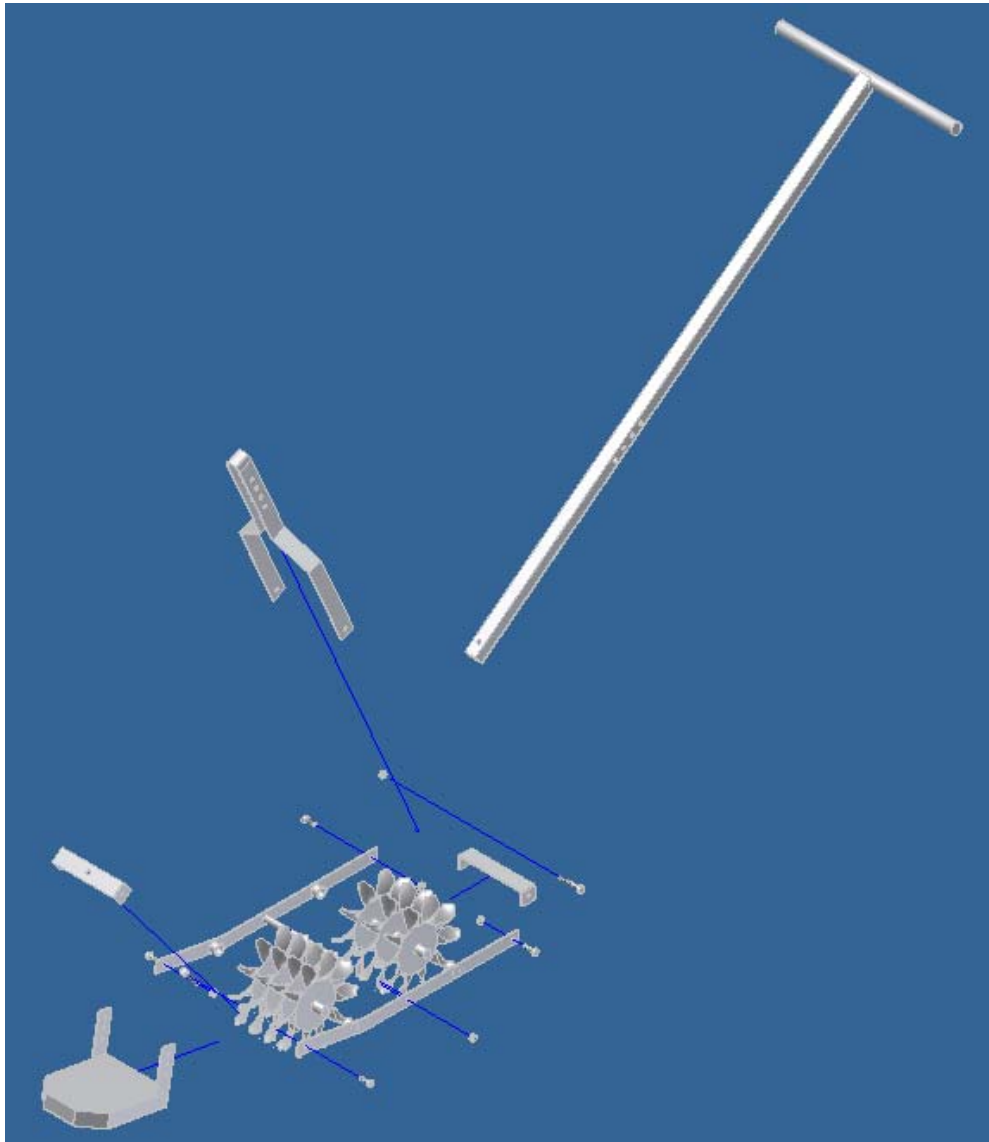


Figure 3: Positioning of important parts of the Twisted-Spike Floating Weeder

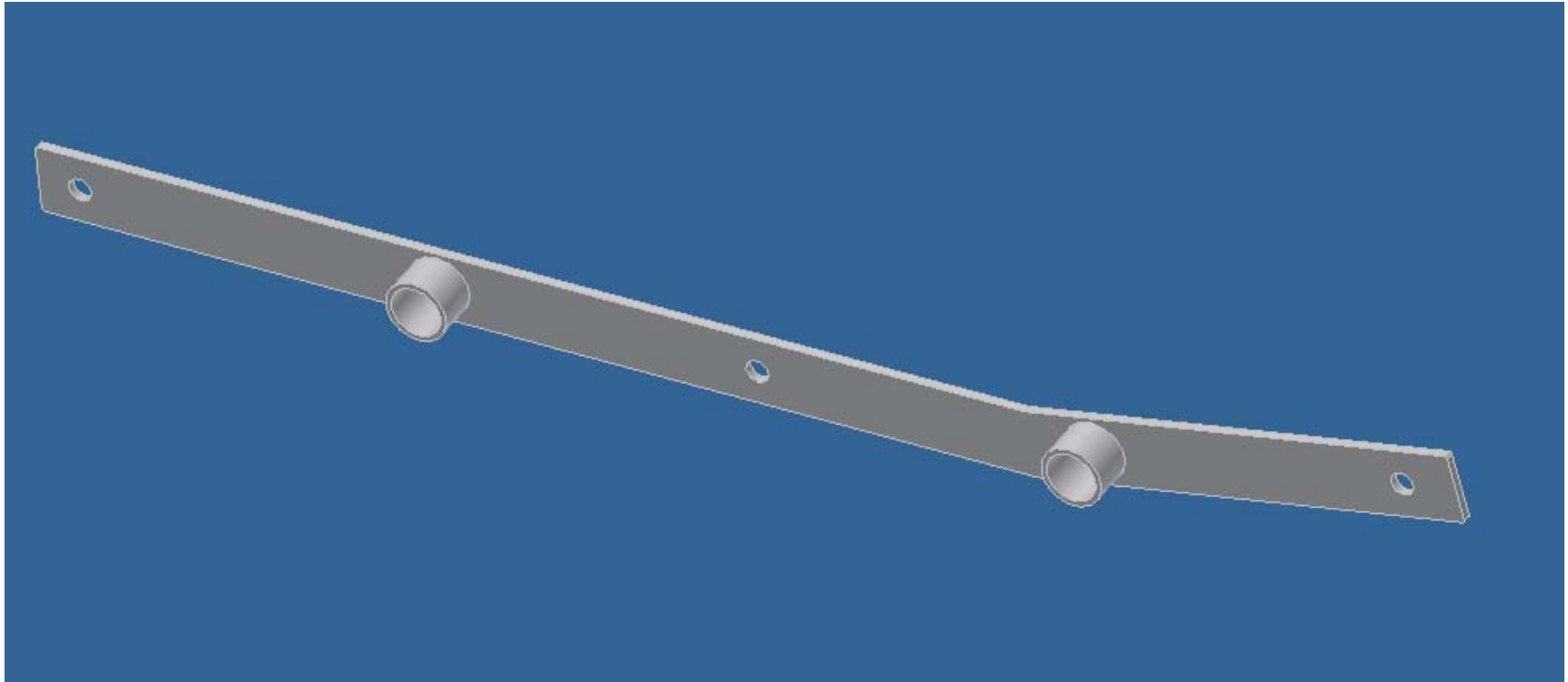


Figure 4A: Pictorial view of the left side frame of the Twisted-Spike Floating Weeder

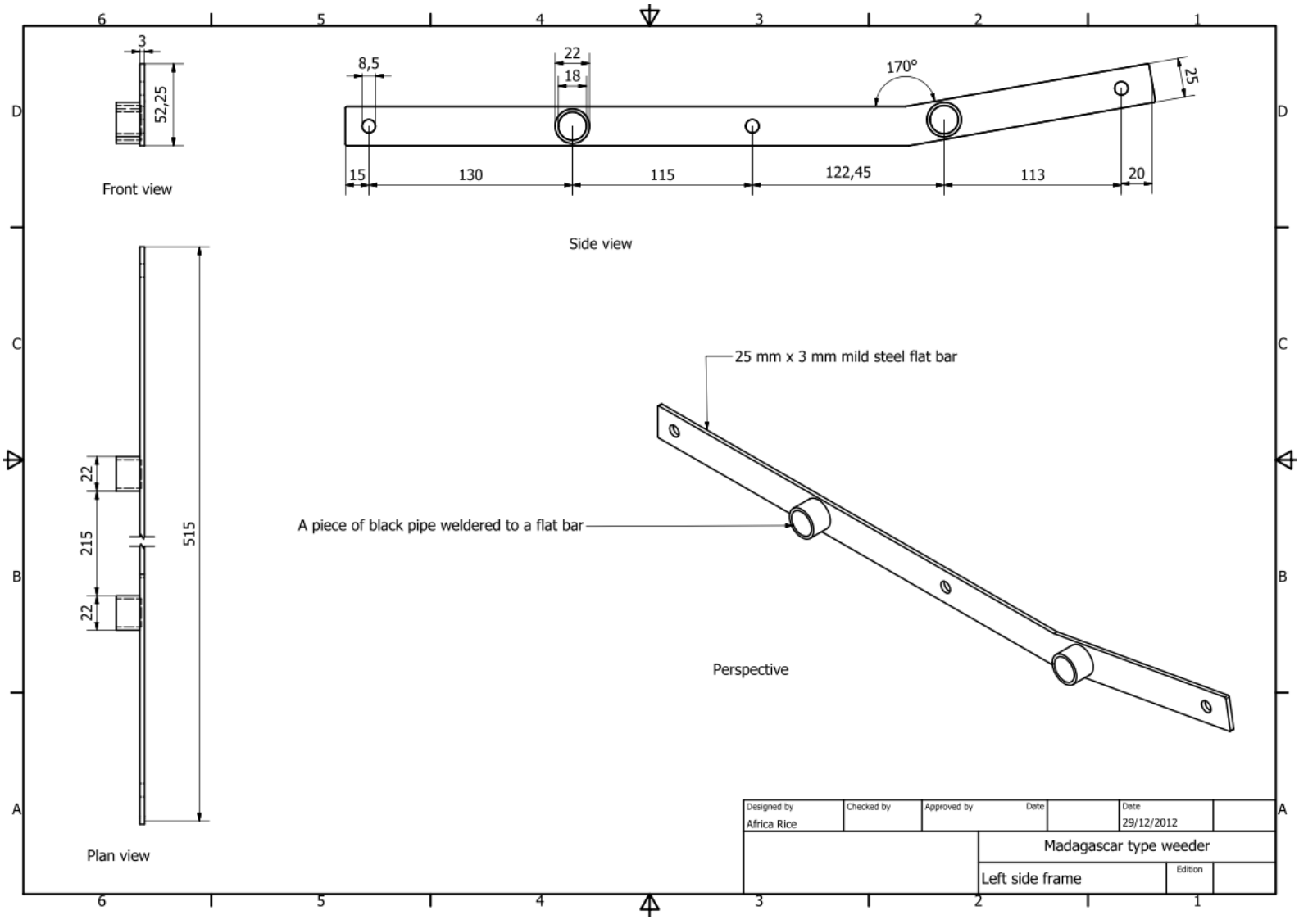


Figure 5B: Technical drawing of the left side frame of the Twisted-Spike Floating Weeder

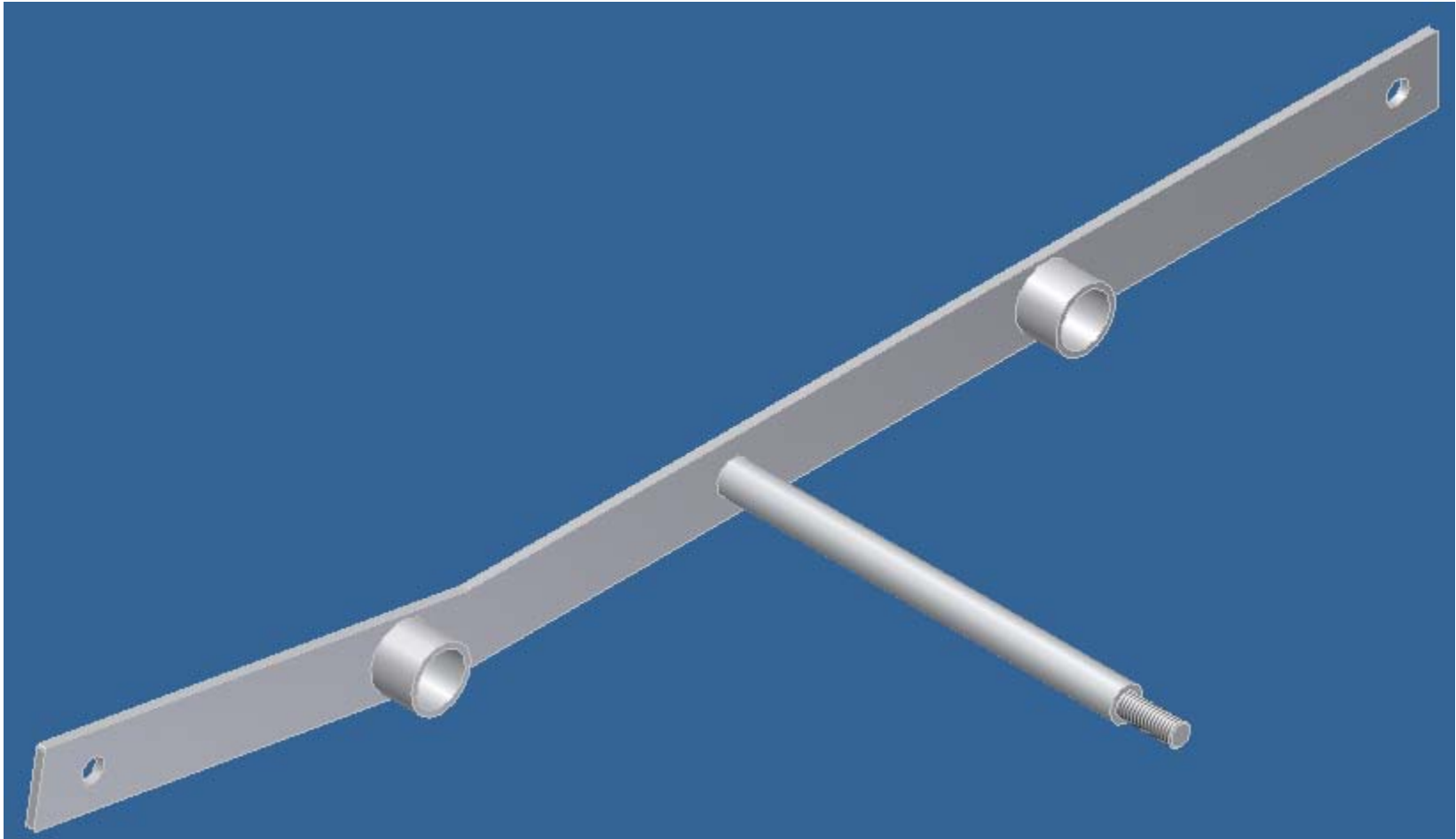


Figure 6A: Pictorial view of the right side frame of Twisted-Spike Floating Weeder

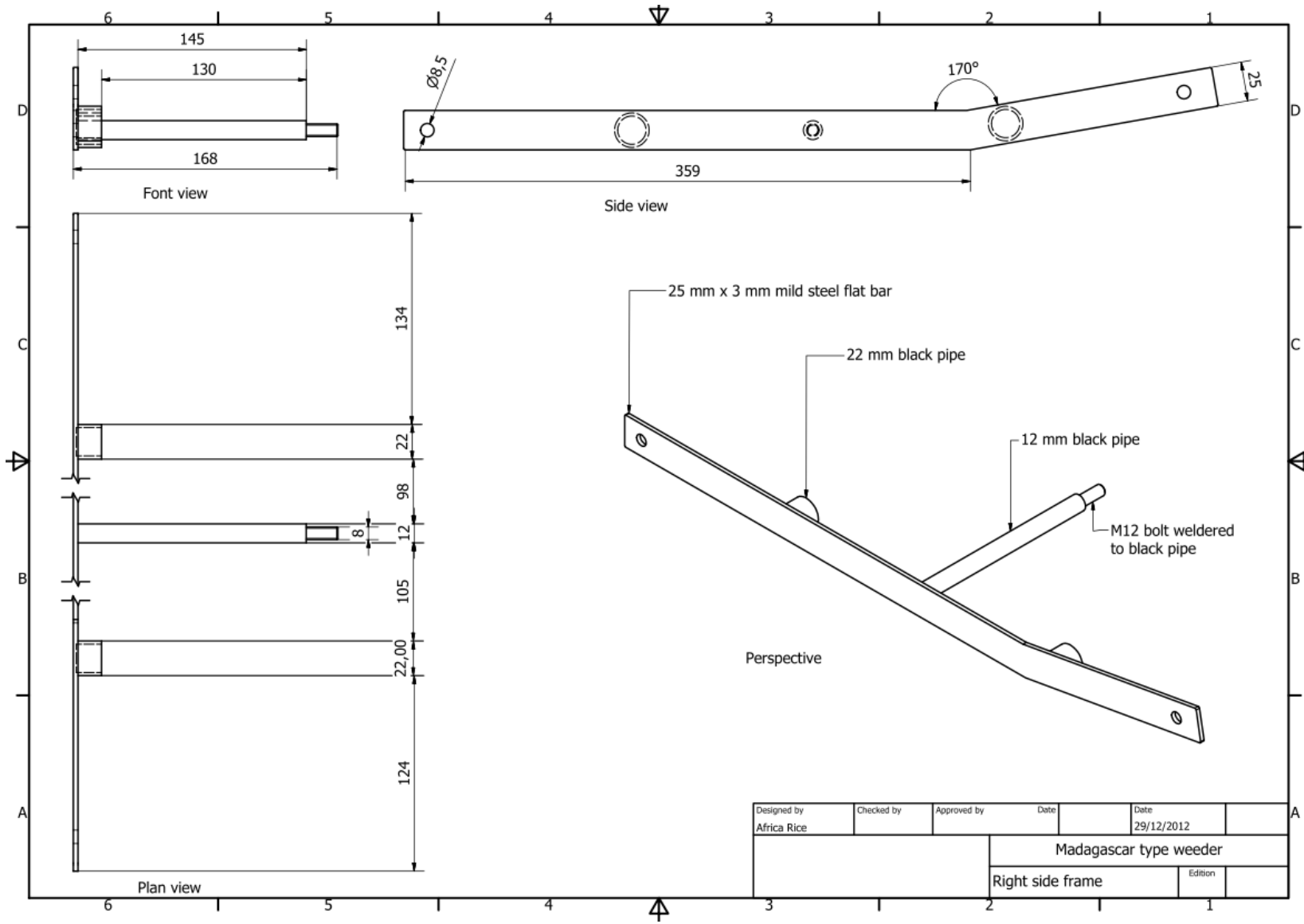


Figure 7B: Technical drawing of the right side frame of Twisted-Spike Floating Weeder

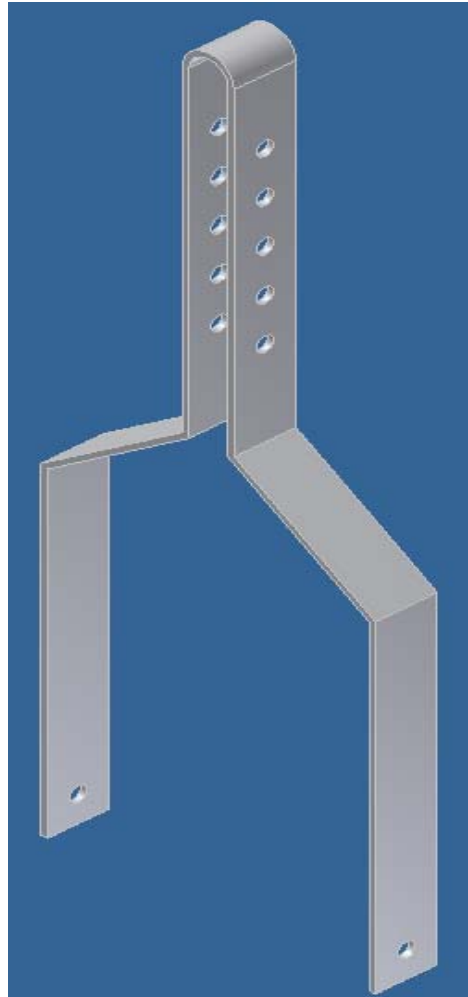


Figure 8A: Pictorial view of the handle supporter

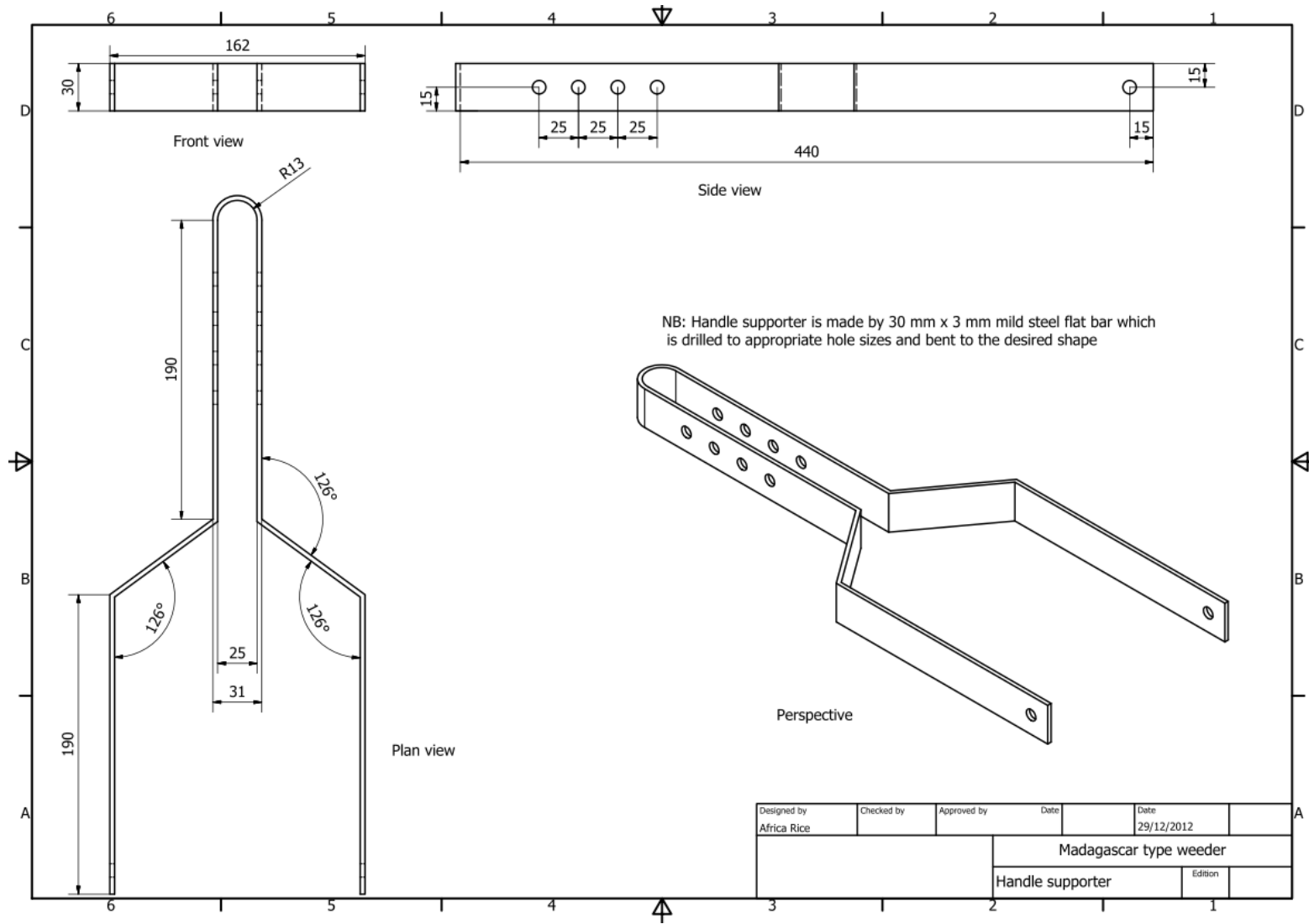


Figure 9B: Technical drawing of the handle supporter

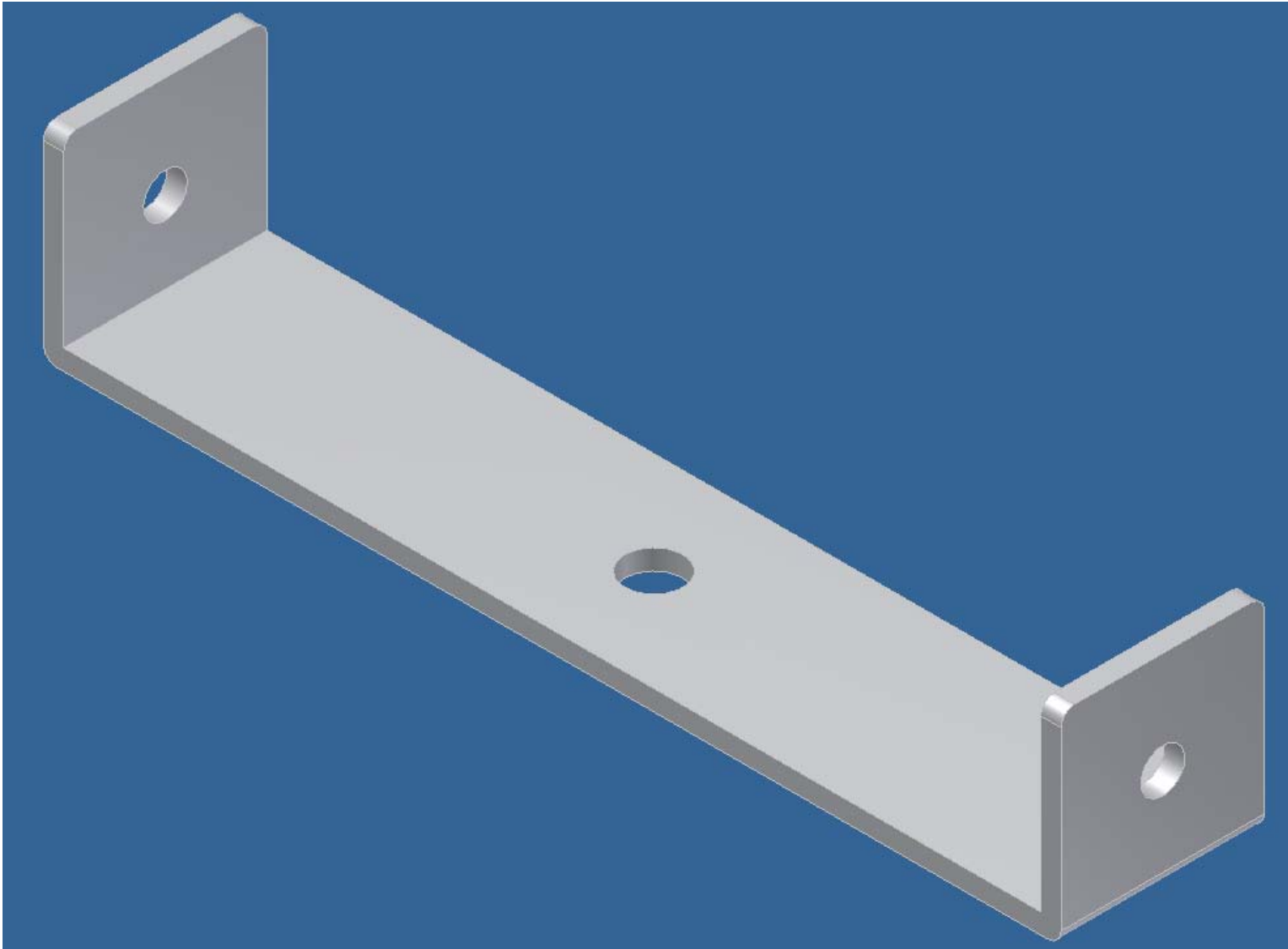


Figure 10A: Pictorial view of the front end frame

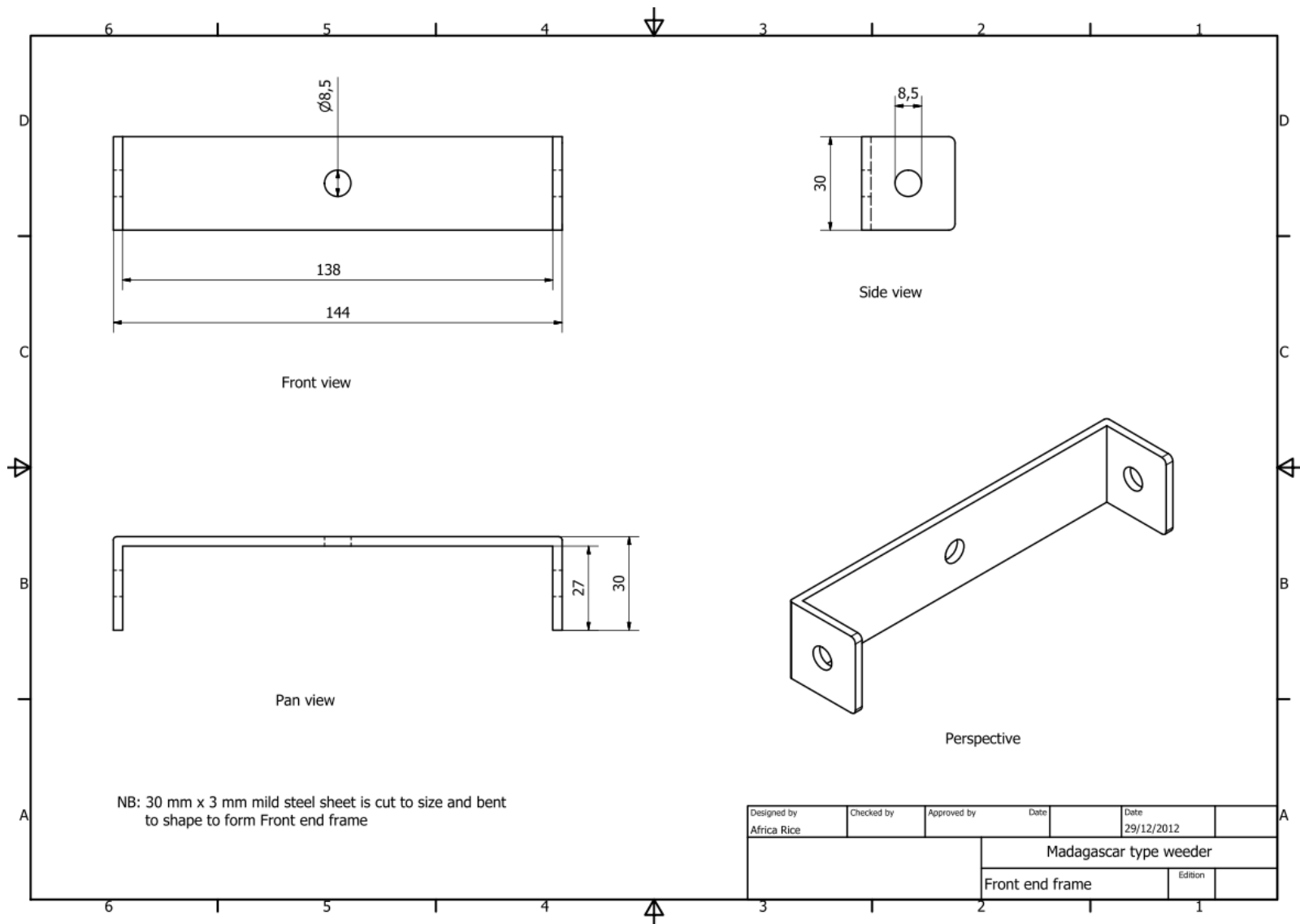


Figure 11B: Technical drawing of the front end frame

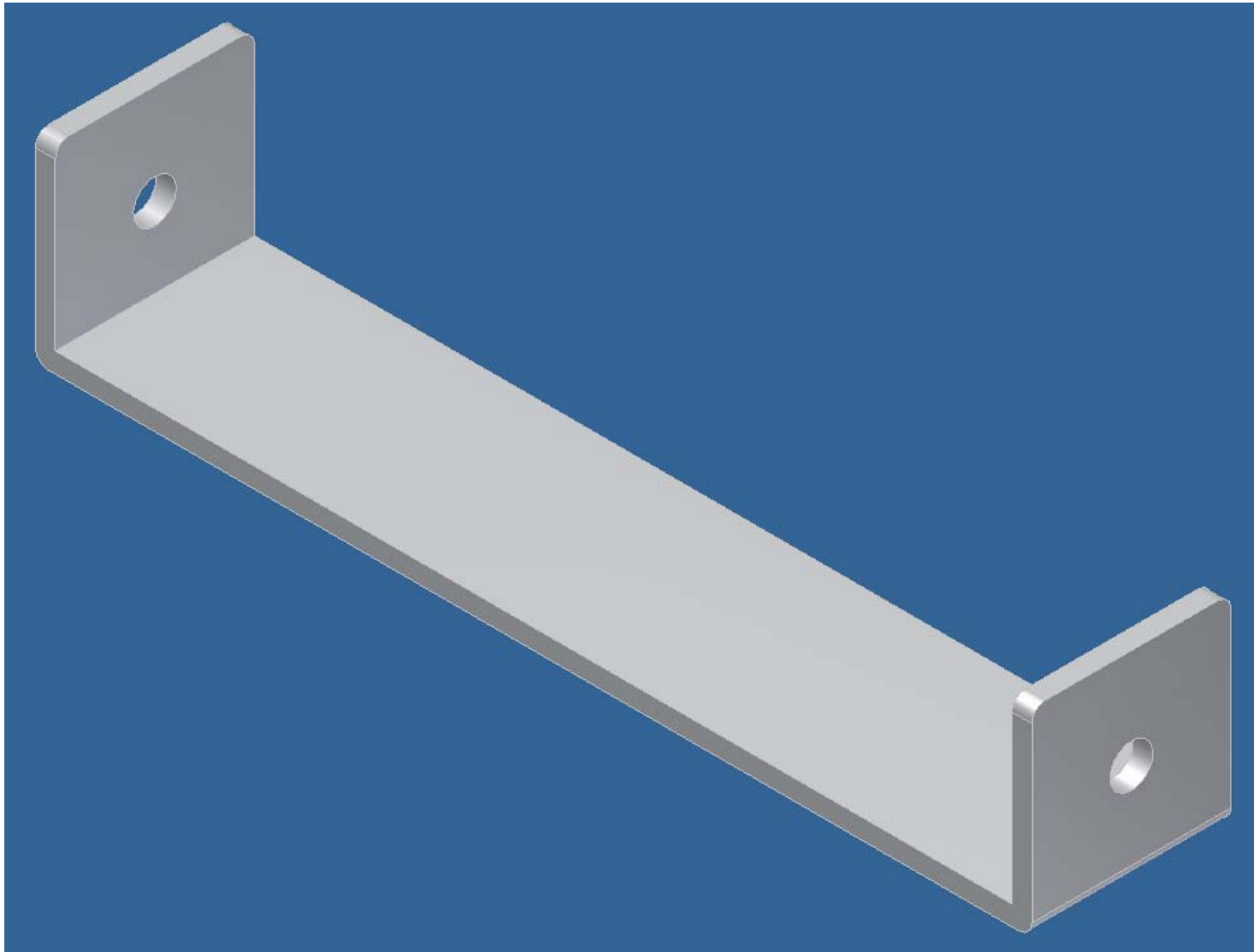


Figure 12A: Pictorial view of the rear end frame

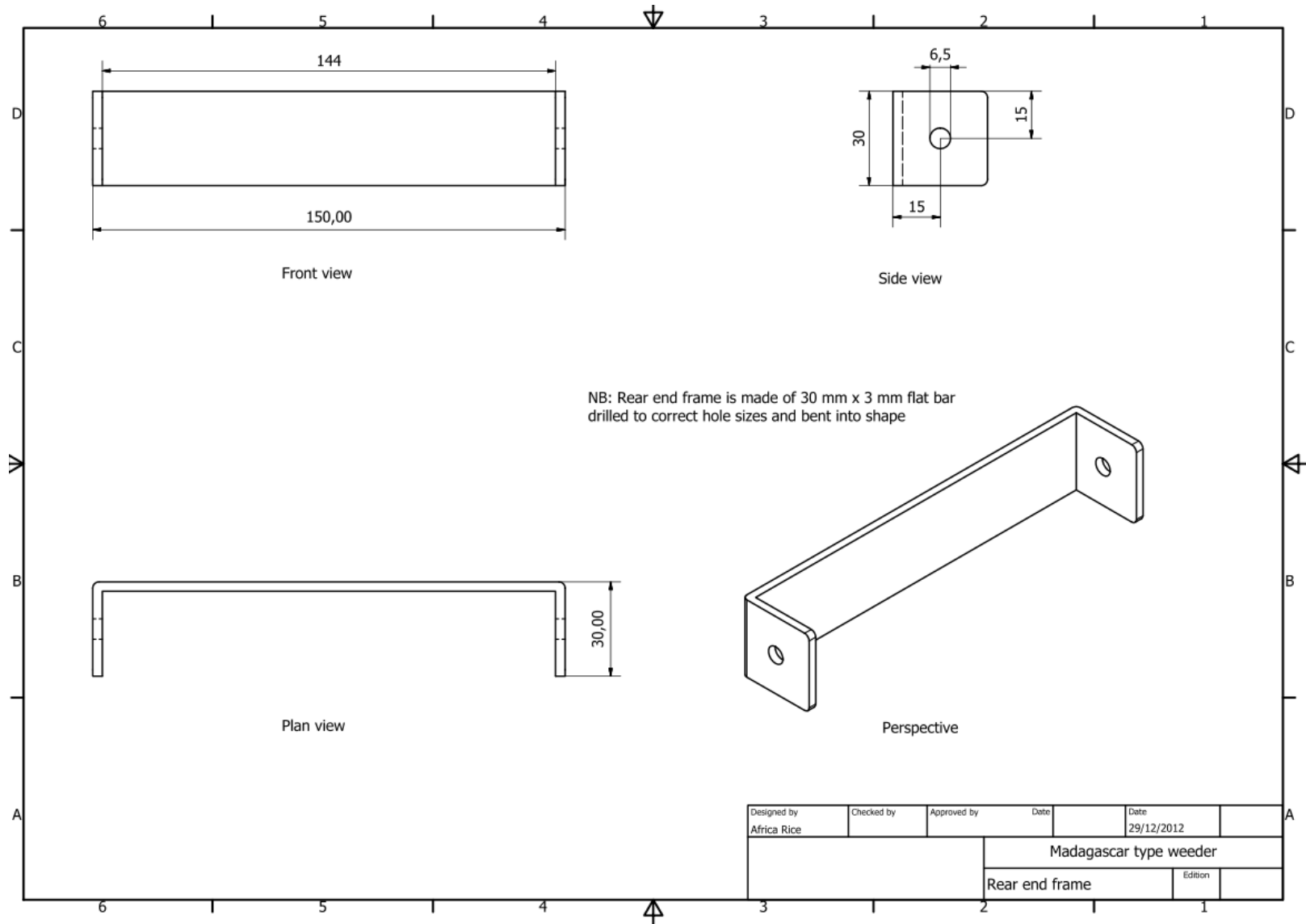


Figure 13B: Technical drawing of the rear end frame

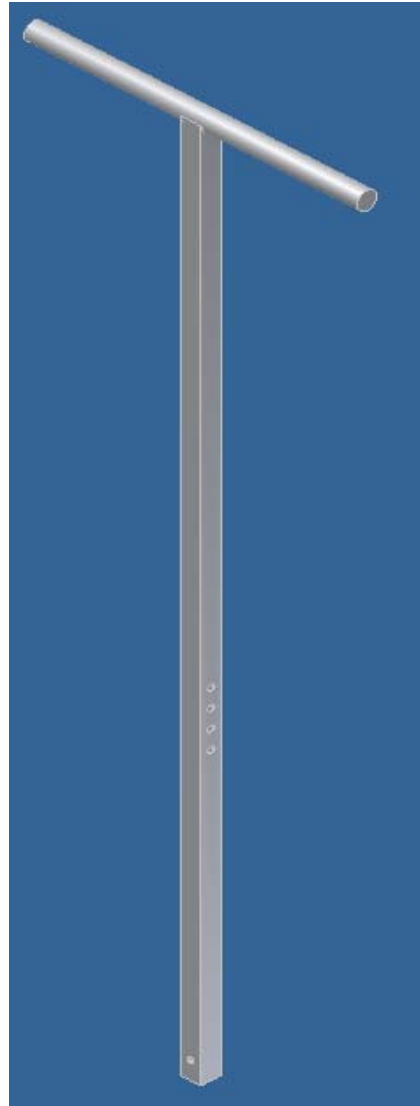


Figure 14A: Pictorial view of the handle

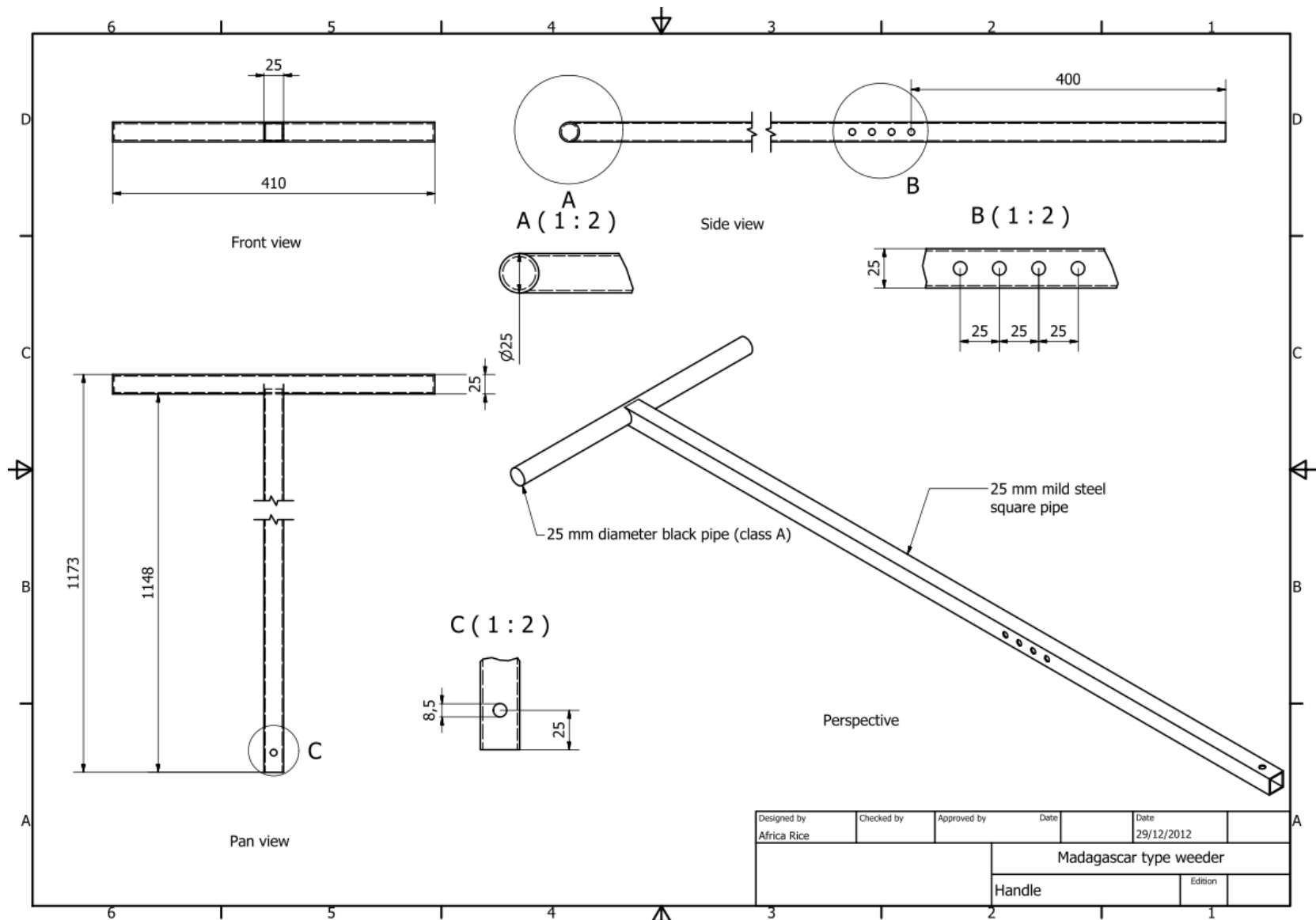


Figure 15B: Technical drawing of the handle

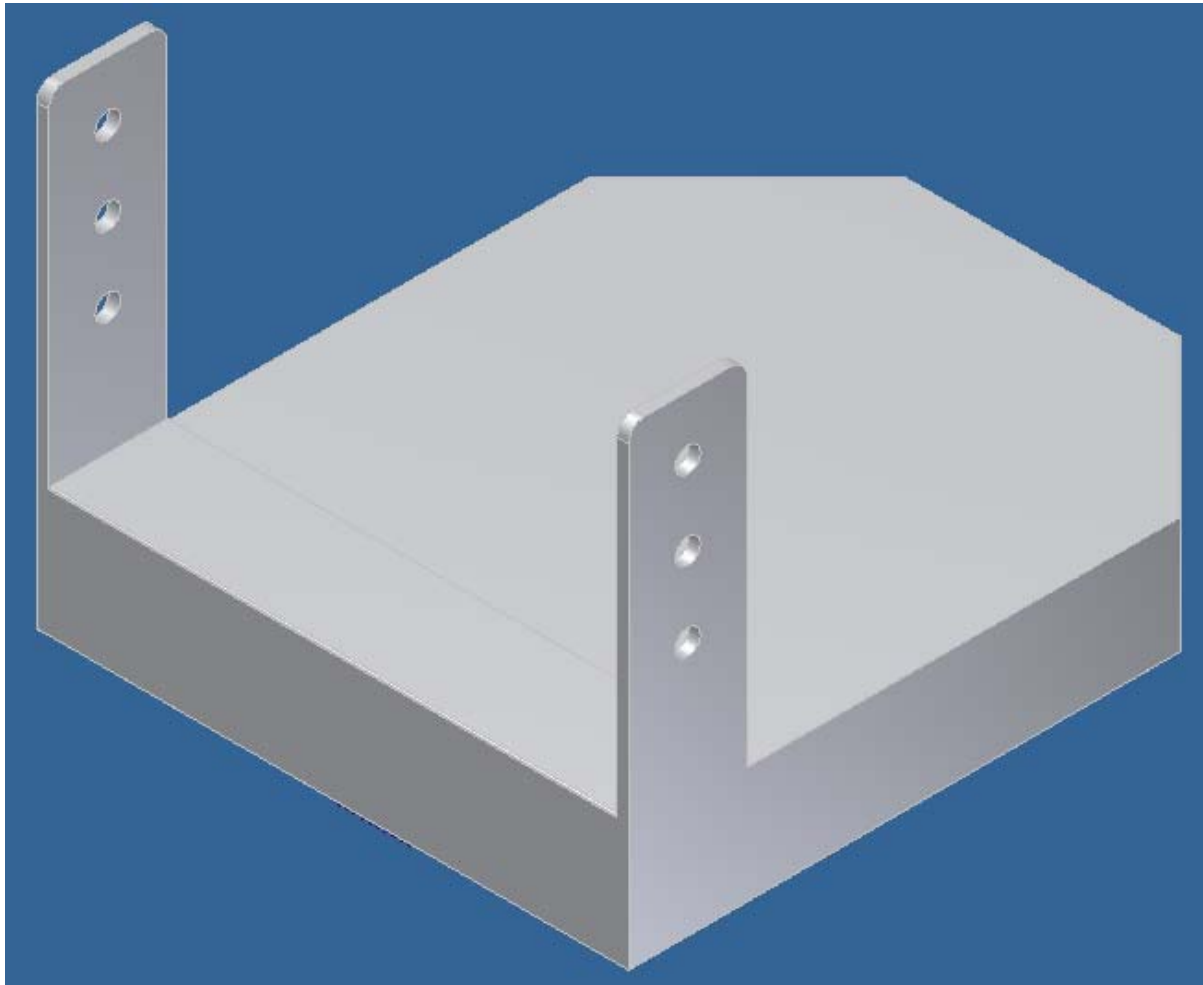


Figure 16A: Pictorial view of the floater

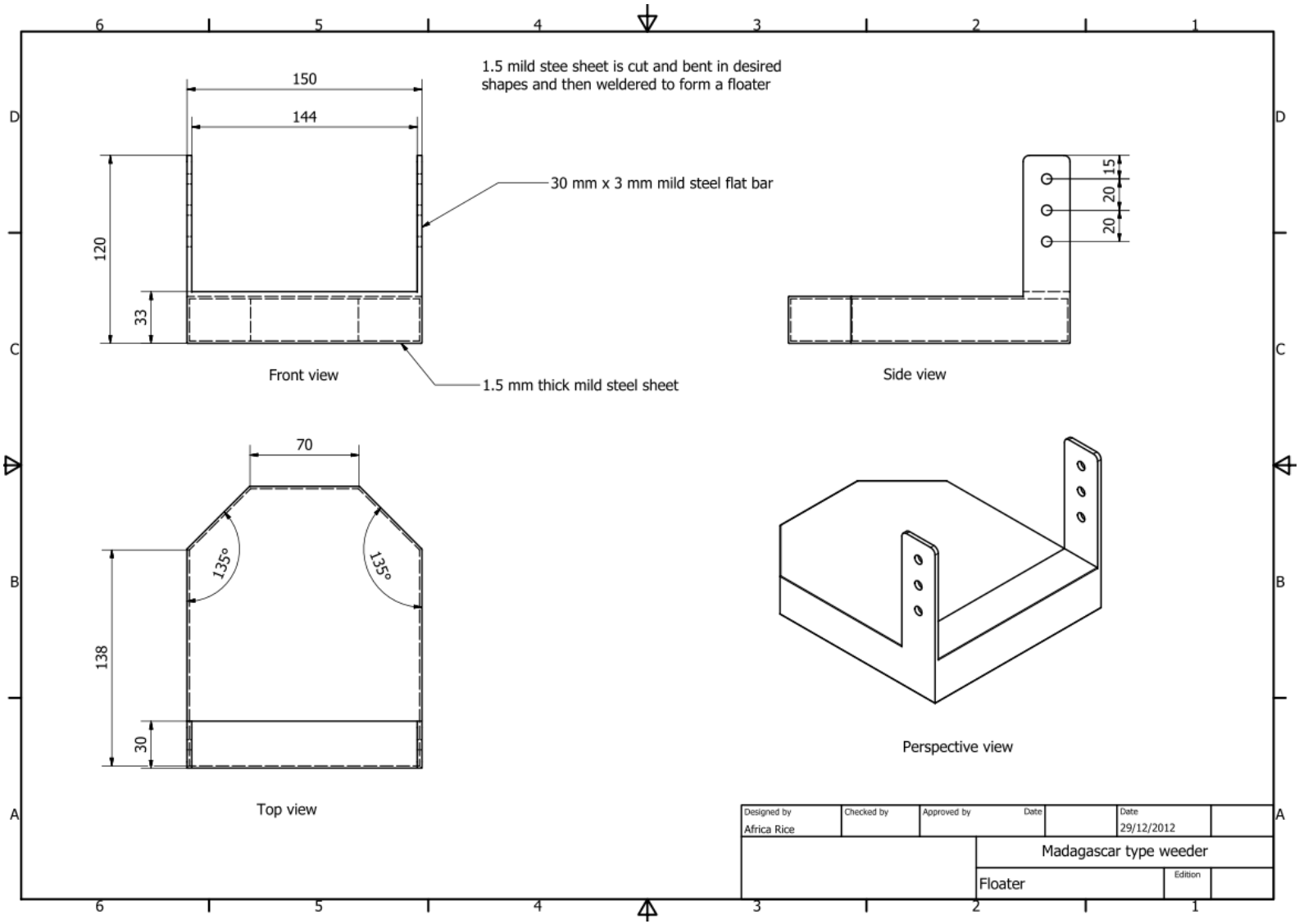


Figure 17B: Technical drawing of the floater

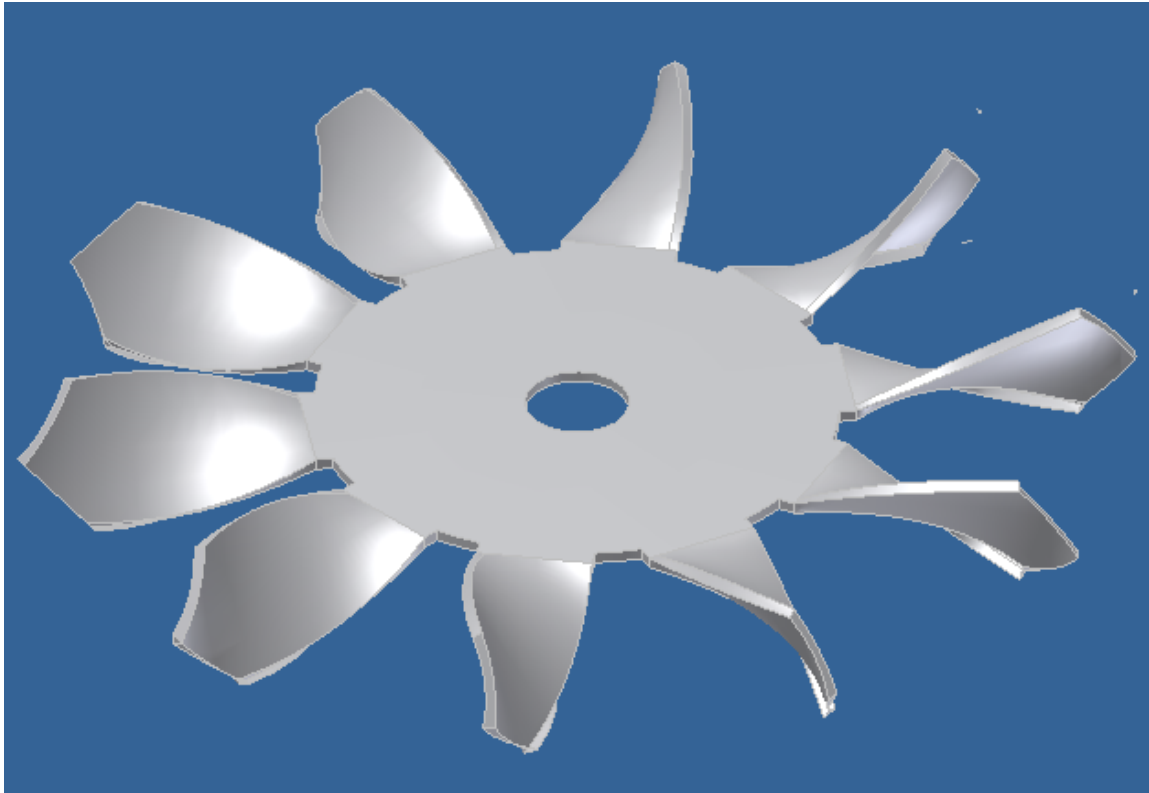


Figure 18A: Pictorial view of the tilling blade

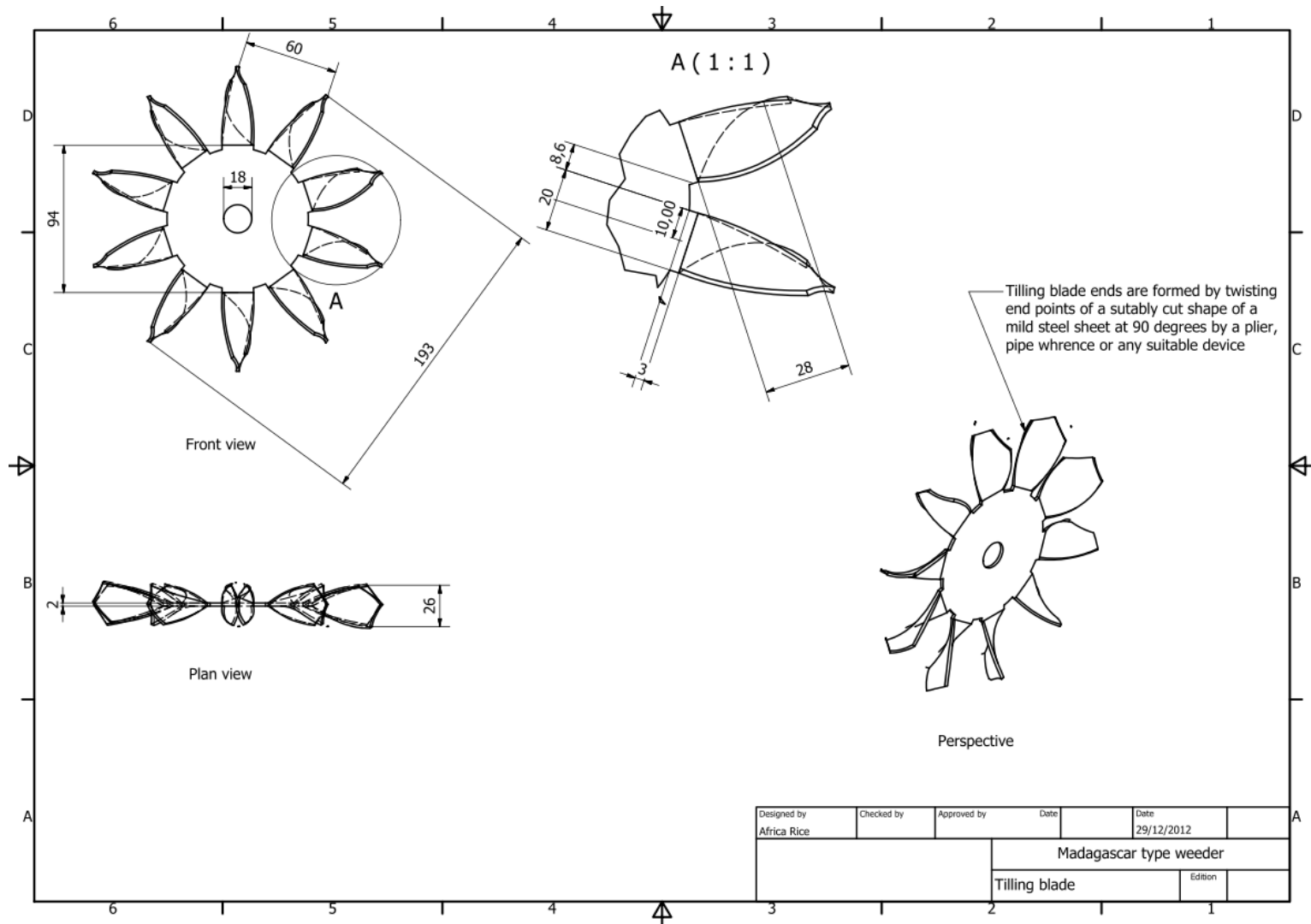


Figure 19B: Technical drawing of the tilling blade

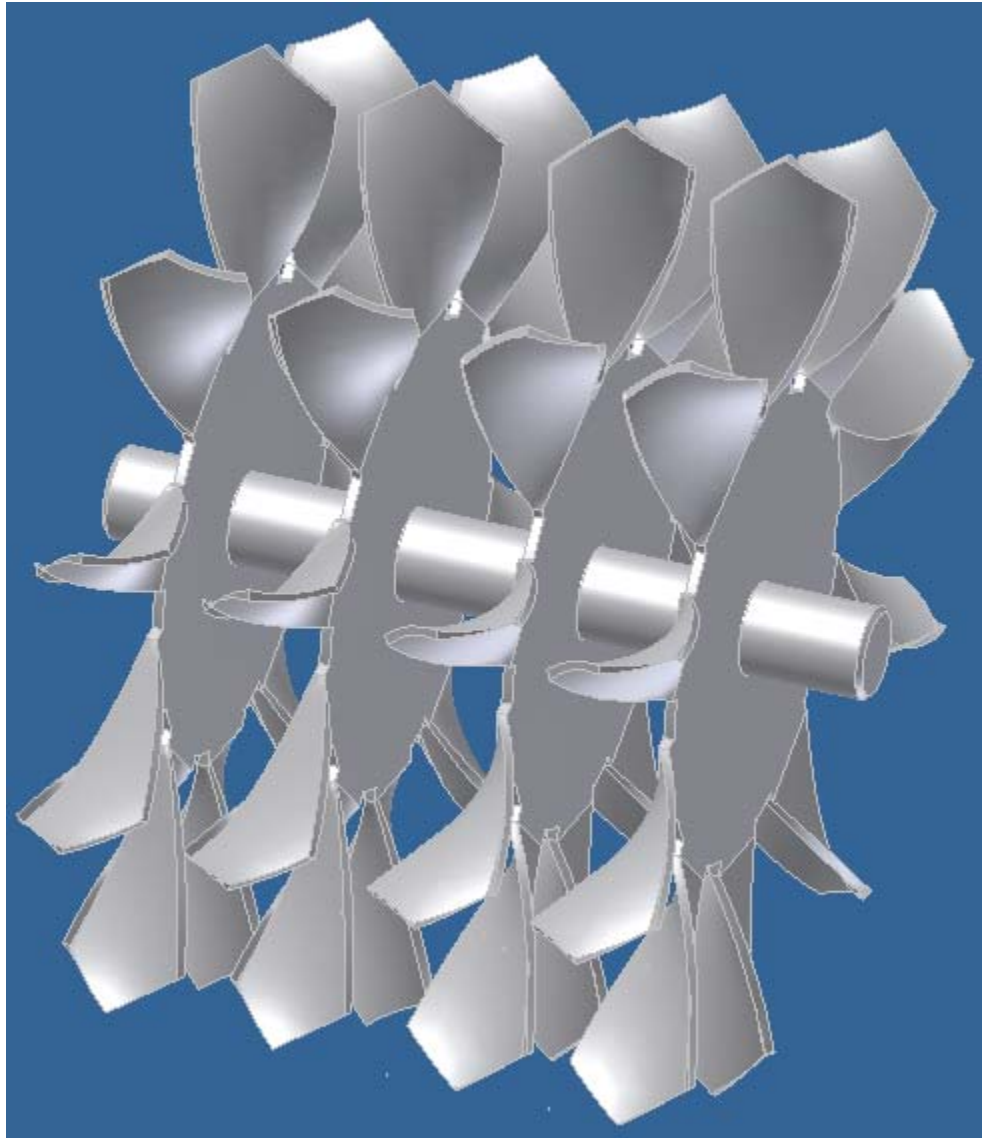


Figure 20A: Pictorial view of the front blade gang

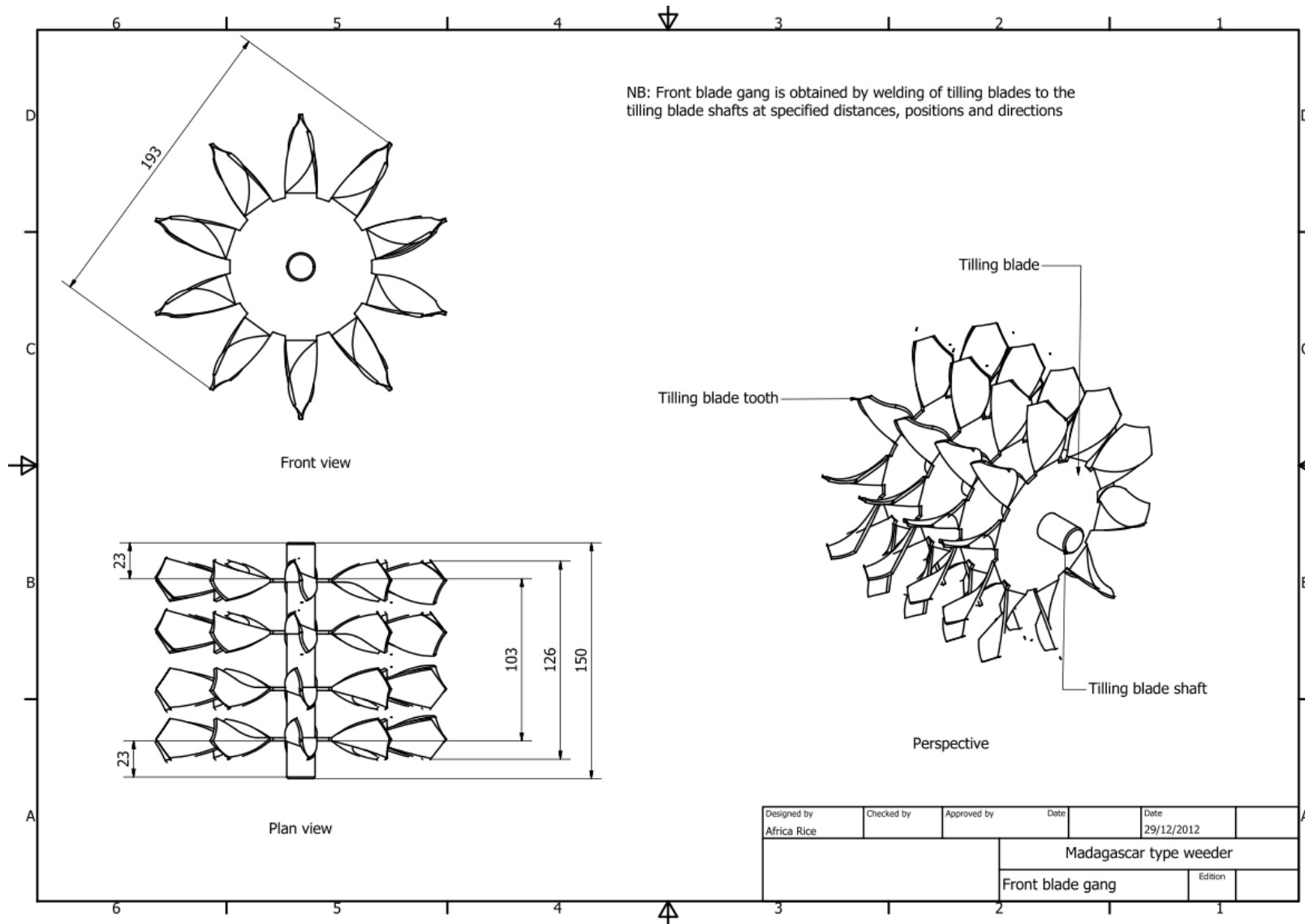


Figure 21B: Technical drawing of the front blade gang

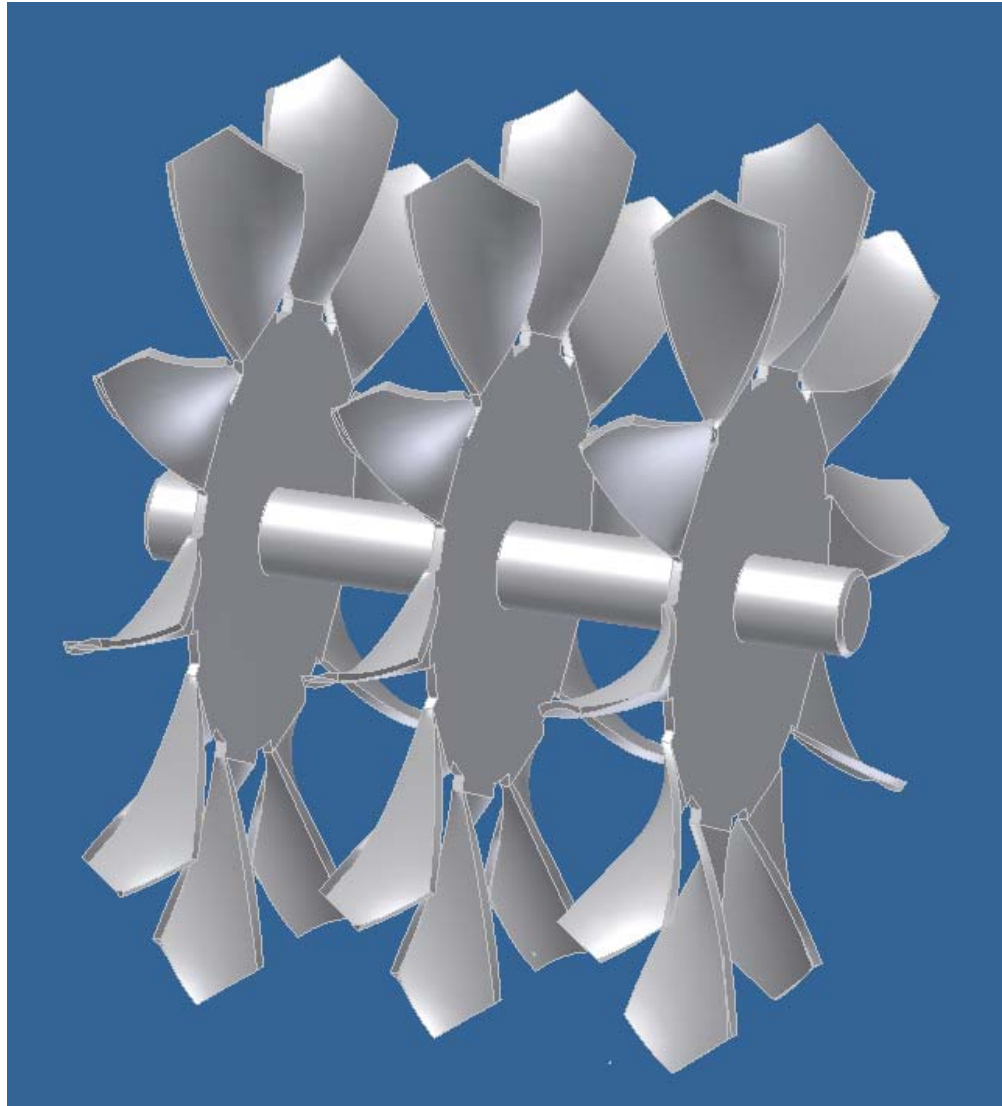


Figure 22A: Pictorial view of the rear blade gang

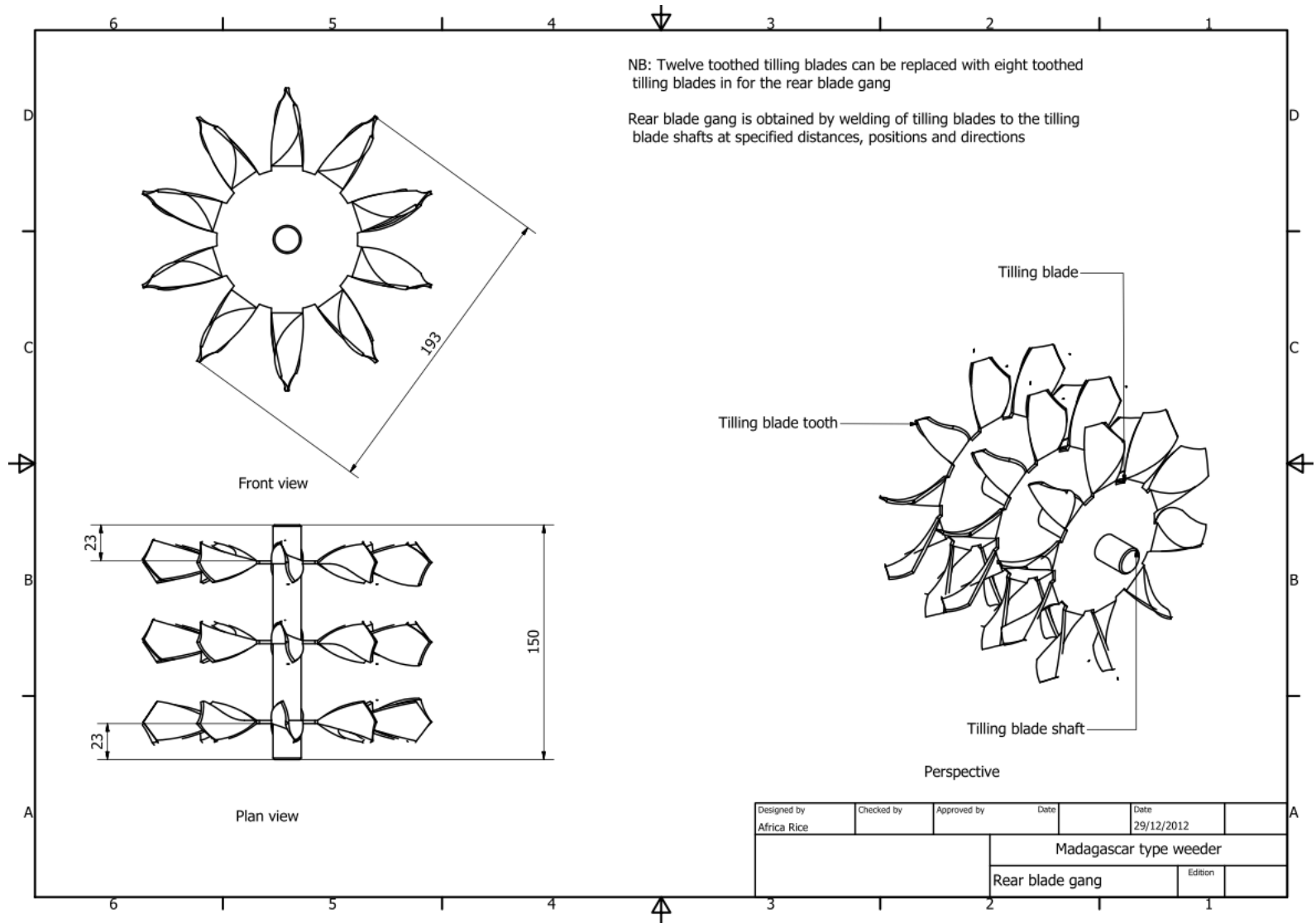


Figure 23B: Technical drawing of the rear blade gang